

**TECHNICAL MANUAL**

**ORGANIZATIONAL, DIRECT SUPPORT AND GENERAL  
SUPPORT MAINTENANCE REPAIR PARTS AND  
SPECIAL TOOLS LIST  
(INCLUDING DEPOT MAINTENANCE REPAIR PARTS)  
FOR**

**MACHINE GUN, 7.62-MM, M60 W/E  
(1005-00-605-7710)**

**MOUNT, TRIPOD, MACHINE GUN,  
7.62-MM, M122  
(1005-00-710-5599)**

**AND**

**MACHINE GUN, 7.62-MM, M60D W/E  
(1005-00-909-3002)**

**APPROVED FOR PUBLIC RELEASE: DISTRIBUTION IS UNLIMITED**

---

**HEADQUARTERS, DEPARTMENT OF THE ARMY**



Technical Manual }  
 No. 9-1005-224-24P }

HEADQUARTERS  
 DEPARTMENT OF THE ARMY  
 Washington, DC

**ORGANIZATIONAL, DIRECT SUPPORT AND GENERAL SUPPORT MAINTENANCE  
 REPAIR PARTS AND SPECIAL TOOLS LIST  
 (INCLUDING DEPOT MAINTENANCE REPAIR PARTS)**

FOR

**MACHINE GUN, 7.62-MM, M60 W/E  
 (1005-00-605-7710)  
 MOUNT, TRIPOD, MACHINE GUN, 7.62-MM, M122  
 (1005-00-710-5599)  
 AND  
 MACHINE GUN, 7.62-MM, M60D W/E  
 (1005-00-909-3002)**

Current as of 9 January 1987

**APPROVED FOR PUBLIC RELEASE: DISTRIBUTION IS UNLIMITED**

**REPORTING ERRORS AND RECOMMENDING IMPROVEMENTS**

You can help improve this manual. If you find any mistakes or if you know of a way to improve the procedures, please let us know. Mail your letter, DA Form 2028 (Recommended Changes to Publications and Blank Forms), or DA Form 2028-2 located in back of this manual direct to: Commander, US Army Armament, Munitions and Chemical Command, ATTN: AMSMC-MAS, Rock Island, IL, 61299-6000. A reply will be furnished to you.

**TABLE OF CONTENTS**

	Page	Illus Figure
<b>Section I.</b> INTRODUCTION .....	1	
<b>Section II.</b> <b>REPAIR PARTS LIST</b> .....	1-1	
Group 00 Machine gun, 7.62-mm M60 and M60D (M60 major assemblies) .....	1-1	1
Machine gun, 7.62-mm M60 and M60D (M60 minor components) .....	2-1	2
Machine gun, 7.62-mm M60 and M60D (M60D major assemblies) .....	3-1	3
Machine gun, 7.62-mm M60 and M60D (M60D minor components) .....	4-1	4
Group 01 Shoulder gunstock assembly (M60 only) .....	5-1	5
Group 02 Grip and trigger assembly (M60D only) .....	6-1	6
Group 03 Breech bolt assembly .....	7-1	7
Group 04 Operating rod assembly .....	8-1	8
Group 05 Trigger mechanism grip assembly (M60 only) .....	9-1	9
Group 06 Sear and safety housing assembly (M60D only) .....	10-1	10

● This manual supersedes TM 9-1005-224-34P, dated 23 April 1976, and in conjunction with TM 9-1005-262-23P, 29 December 1986, supersedes TM 9-1005-262-24P, dated 11 June 1971, including all changes.

		Page	Illus Figure
Group 07	Barrel and biped assembly . . . . .	11-1	11
	0701 Machine gun bipod . . . . .	12-1	12
	070101 Machine gun leg (right) . . . . .	13-1	13
	070102 Machine gun leg (left) . . . . .	14-1	14
Group 08	Cover and lever assembly . . . . .	15-1	15
	0801 Feed cam assembly . . . . .	16-1	16
	0802 Feed lever assembly . . . . .	16-1	16
	0803 Feed pawl assembly . . . . .	17-1	17
	0804 Cover housing assembly . . . . .	18-1	18
Group 09	Tray and hanger assembly (M60 only) . . . . .	19-1	19
	0901 Cartridge feed tray assembly (M60 only). . . . .	20-1	20
Group 10	Cartridge feed tray assembly (M60D only) . . . . .	21-1	21
Group 11	Forearm assembly (M60 only) . . . . .	22-1	22
Group 12	Rearsight (M60 only) . . . . .	23-1	23
	1201 Rear sight leaf assembly (M60 only).. . . . .	24-1	24
Group 13	Rear sight (M60D only) . . . . .	25-1	25
Group 14	Cocking handle assembly . . . . .	26-1	26
Group 15	Gun receiver assembly (M60 only) . . . . .	27-1	27
Group 16	Gun receiver assembly (M60D only) . . . . .	28-1	28
Group 17	Tripod mount, M122 machine gun(major assemblies) . . . . .	29-1	29
Group 17	Tripod mount, M122 machine gun (major components) . . . . .	30-1	30
	1701 Traversing and elevating mechanism assembly (traversing and clamping unit) . . . . .	31-1	31
	1701 Traversing and elevating mechanism assembly (elevating unit) . . . . .	32-1	32
	1702 Pintle assembly . . . . .	33-1	33
	1703 Tripod mount leg . . . . .	34-1	34
	1704 Pintle lock assembly . . . . .	35-1	35
Group 99	Bulk materials list . . . . .		Bulk
<b>Section III.</b>	<b>SPECIAL TOOL LIST</b> . . . . .		
Group 9500	Special tools . . . . .	36-1	36
<b>SECTION IV.</b>	<b>NATIONAL STOCK NUMBER AND PART NUMBER INDEX</b> . . . . .	I-1	

**ORGANIZATIONAL, DIRECT SUPPORT, AND  
GENERAL SUPPORT MAINTENANCE  
REPAIR PARTS AND SPECIAL TOOLS LIST  
(INCLUDING DEPOT MAINTENANCE REPAIR PARTS)**

**Section I. INTRODUCTION**

**1. SCOPE.** This RPSTL lists and authorizes spares and repair parts; special tools; and other special support equipment required for performance of organizational, direct support, and general support maintenance of the 7.62-mm machine gun, M60; tripod mount, MI 22 and 7.62-mm machine gun, M60D. It authorizes the requisitioning, issue, and disposition of spares, repair parts and special tools indicated by the Source, Maintenance and Recoverability (SMR) codes.

**2. GENERAL.** In addition to Section 1, Introduction, this Repair Parts and Special Tools List is divided into the following sections:

a. *Section II. Repair Parts List.* A list of spares and repair parts authorized by this RPSTL for use in the performance of maintenance. The list also includes parts which must be removed for replacement of the authorized parts. Parts lists are composed of functional groups in ascending alphanumeric sequence, with the parts in each group listed in ascending figure and item number sequence. Bulk materials are listed in item name sequence. Repair parts kits are listed separately in their own functional group within section II. Repair parts for repairable special tools are also listed in this section. Items listed are shown on the associated illustration(s)/figure(s).

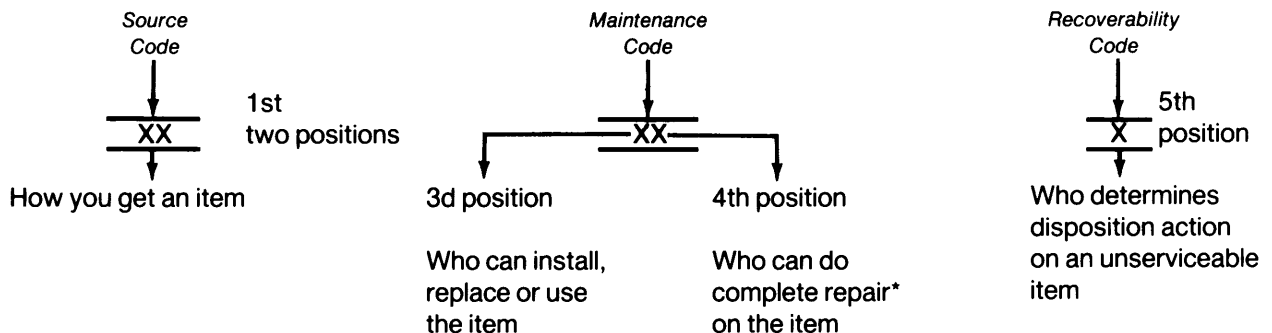
b. *Section III. Special Tools List.* A list of special tools and other special support equipment authorized by this RPSTL (as indicated by Basis of Issue (BOI) information in DESCRIPTION AND USABLE ON CODE column) for the performance of maintenance.

c. *Section IV. National Stock Number and Part Number Index.* A list, in National item identification number (NIIN) sequence, of all National stock numbered items appearing in the listing, followed by a list in alphanumeric sequence of all part numbers appearing in the listings. National stock numbers and part numbers are cross-referenced to each illustration figure and item number appearance.

**3. EXPLANATION OF COLUMNS (SECTIONS II AND III).**

a. *ITEM NO. (Column (1)).* Indicates the number used to identify items called out in the illustration.

b. *SMR CODE (Column (2)).* The Source, Maintenance, and Recoverability (SMR) code is a 5-position code containing supply/requisitioning information, maintenance category authorization criteria, and disposition instruction, as shown in the following breakout:



\*Complete Repair: Maintenance capacity, capability, and authority to perform all corrective maintenance tasks of the "Repair" function in a use/user environment in order to restore serviceability to a failed item.

(1) Source code. The source code tells you how you get an item needed for maintenance, repair, or overhaul of an end item/equipment. Explanations of source codes follow:

Code

Explanation

PA  
PB  
PC\*\*  
PD  
PE  
PF  
PG

Stocked items; use the applicable NSN to request/requisition items with these source codes. They are authorized to the category indicated by the code entered in the 3d position of the SMR code.

**\*\*NOTE:** Items coded PC are subject to deterioration.

KD  
KF  
KB

Items with these codes are not to be requested/requisitioned individually. They are part of a kit which is authorized to the maintenance category indicated in the 3d position of the SMR code. The complete kit must be requisitioned and applied.

MO-(Made at org/  
AVUM Level)  
MF-(Made at DS/  
AVIM Level)  
MH-(Made at GS  
Level)  
ML-(Made at  
Specialized  
Repair Act (SRA)  
MD-(Made at Depot)

Items with these codes are not to be requested/requisitioned individually. They must be made from bulk material which is identified by the part number in the DESCRIPTION AND USABLE ON CODE (UOC) column and listed in the bulk material group in the repair parts list in this RPSTL. If the item is authorized to you by the 3d position code of the SMR code, but the source code indicates it is made at a higher level, order the item from the higher level of maintenance.

AO-(Assembled by  
org/AVUM Level)  
AF-(Assembled by  
DS/AVIM Level)  
AH-(Assembled by  
GS Level)  
AL-(Assembled by  
SRA)  
AD-(Assembled by  
Depot)

Items with these codes are not to be requested/requisitioned individually. The parts that make up the assembled item must be requisitioned or fabricated and assembled at the level of maintenance indicated by the source code. If the 3d position code of the SMR code authorizes you to replace the item, but the source code indicates the item is assembled at a higher level, order the item from the higher level of maintenance.

- XA - Do not requisition an "XA" -coded item. Order its next higher assembly. (Also, refer to the NOTE below.)
- XB - If an "XB" item is not available from salvage, order it using the FSCM and part number given.
- XC - Installation drawing, diagram, instruction sheet, field service drawing, that is identified by manufacturer's part number.
- XD - Item is not stocked. Order an "XD" -coded item through normal supply channels using the FSCM and part number given, if no NSN is available.

**NOTE**

Cannibalization or controlled exchange, when authorized, maybe used as a source of supply for items with the above source codes, except for those source coded 'XA" or those aircraft support items restricted by requirements of AR 700-42.

(2) Maintenance code. Maintenance codes tell you the level(s) of maintenance authorized to USE and REPAIR support items. The maintenance codes are entered in the third and fourth positions of the SMR code as follows:

(a) The maintenance code entered in the third position tells you the lowest maintenance level authorized to remove, replace, and use an item. The maintenance code entered in the third position will indicate authorization to one of the following levels of maintenance:

Code	<i>Application/Explanation</i>
C	Crew or operator maintenance done within organizational or aviation unit maintenance.
O	- Organizational or aviation unit category can remove, replace, and use the item.
F	- Direct support or aviation intermediate level can remove, replace, and use the item.
H	- General support level can remove, replace, and use the item.
L	- Specialized repair activity can remove, replace, and use the item.
D	- Depot level can remove, replace, and use the item.

(b) The maintenance code entered in the fourth position tells you whether or not the item is to be repaired and identifies the lowest maintenance level with the capability to do complete repair (i.e., perform all authorized repair functions).

**NOTE**

Some limited repair may be done on the item at a lower level of maintenance, if authorized by the Maintenance Allocation Chart (MAC) and SMR codes.

This position will contain one of the following maintenance codes:

Code	<i>Application/Explanation</i>
O	Organizational or aviation unit is the lowest level that can do complete repair of the item.
F	- Direct support or aviation intermediate is the lowest level that can do complete repair of the item.
H	- General support is the lowest level that can do complete repair of the item.
L	- Specialized repair activity (designate the specialized repair activity) is the lowest level that can do complete repair of the item.
D	- Depot is the lowest level that can do complete repair of the item.
Z	- Nonreparable. No repair is authorized.
B	- No repair is authorized. No parts or special tools are authorized for the maintenance of a "B" coded item. However, the item may be reconditioned by adjusting, lubricating, etc., at the user level.

(3) Recoverability code. Recoverability codes are assigned to items to indicate the disposition action on unserviceable items. The recoverability code is entered in the fifth position of the SMR code as follows:

<i>Recoverability Codes</i>	<i>Application/Explanation</i>
z	Nonreparable item. When unserviceable, condemn and dispose of the item at the level of maintenance shown in 3d position of SMR code.
o	Reparable item. When uneconomically repairable, condemn and dispose of the item at organizational or aviation unit level.
F	Reparable item. When uneconomically repairable, condemn and dispose of the item at the direct support or aviation intermediate level.
H	Reparable item. When uneconomically repairable, condemn and dispose of the item at the general support level.
D	Reparable item. When beyond lower level repair capability, return to depot. Condemnation and disposal of item not authorized below depot level.
L	Reparable item. Condemnation and disposal not authorized below specialized repair activity (SRA).
A	Item requires special handling or condemnation procedures because of specific reasons (e.g., precious metal content, high dollar value, critical material, or hazardous material). Refer to appropriate manuals/directives for specific instructions.

c. *FSCM (Column (3))*. The Federal Supply Code for Manufacturer (FSCM) is a 5-digit numeric code which is used to identify the manufacturer, distributor, or Government agency, etc., that supplies the item.

d. *PART NUMBER (Column (4))*. Indicates the primary number used by the manufacturer (individual, company, firm, corporation, or Government activity), which controls the design and characteristics of the item by means of its engineering drawings, specifications standards, and inspection requirements to identify an item or range of items.

**NOTE**

When you use an NSN to requisition an item, the item you receive may have a different part number from the part ordered.

e. *DESCRIPTION AND USABLE ON CODE (UOC) (Column (5))*. This column includes the following information:

- (1) The Federal item name and, when required, a minimum description to identify the item.
- (2) Items that are included in kits and sets are listed below the name of the kit or set.
- (3) Spare/repair parts that make up an assembled item are listed immediately following the assembled item line entry.
- (4) Part numbers for bulk materials are referenced in this column in the line item entry for the item to be manufactured/fabricated.
- (5) The usable on code, when applicable (see paragraph 5, special information).
- (6) In the Special Tools List section, the basis of issue (BOI) appears as the last line(s) in the entry for each special tool and other special support equipment. When density of equipments supported exceeds density spread indicated in the basis of issue, the total authorization is increased proportionately.
- (7) The statement "END OF FIGURE" appears just below the last item description in column 5 for a given figure in both section II and section III.



f. QTY (Column (6)). The QTY (quantity per figure column) indicates the quantity of the item used in the breakout shown on the illustration figure, which is prepared for a functional group, subfunctional group, or an assembly. A "V" appearing in this column in lieu of a quantity indicates that the quantity is variable and the quantity may vary from application to application.

**4. EXPLANATION OF COLUMNS (SECTION IV).**

a. *NATIONAL STOCK NUMBER (NSN) INDEX.*

(1) STOCK NUMBER column. This column lists the NSN by National item identification number

(NIIN) sequence. The NIIN consists of the last nine digits of the NSN (i.e.,  $\frac{5385-01-574-1476}{\text{NIIN}}$ ).

When using this column to locate an item, ignore the first 4 digits of the NSN. However, the complete NSN should be used when ordering items by stock number.

(2) FIG. column. This column lists the number of the figure where the item is identified/located. The figures are in numerical order in section II and section III.

(3) ITEM column. The item number identifies the item associated with the figure listed in the adjacent FIG. column. This item is also identified by the NSN listed on the same line.

b. *PART NUMBER INDEX.* Part numbers in this index are listed by part number in ascending alphanumeric sequence (i.e., vertical arrangement of letter and number combination which places the first letter or digit of each group in order A through Z, followed by the numbers 0 through 9 and each following letter or digit in like order).

(1) FSCM column. The Federal Supply Code for Manufacturer (FSCM) is a 5-digit numeric code used to identify the manufacturer, distributor, or Government agency, etc., that supplies the item.

(2) PART NUMBER column. Indicates the primary number used by the manufacturer (individual, firm, corporation, or Government activity), which controls the design and characteristics of the item by means of its engineering drawings, specifications standards, and inspection requirements to identify an item or range of items.

(3) STOCK NUMBER column. This column lists the NSN for the associated part number and manufacturer identified in the PART NUMBER and FSCM columns to the left.

(4) FIG. column. This column lists the number of the figure where the item is identified/located in sections II and III.

(5) ITEM column. The item number is that number assigned to the item as it appears in the figure referenced in the adjacent figure number column.

**5. SPECIAL INFORMATION.**

a. *Usable on Code.* The usable on code appears in the lower left corner of the DESCRIPTION column heading. Usable on codes are shown as "UOC: . . . . ." in DESCRIPTION column (justified left) on the first line applicable item description/nomenclature. Uncoded items are applicable to all models. Identification of the usable on codes used in the RPSTL are:

<i>Code</i>	<i>Used On</i>
023	7.62-MM Machine Gun, M60
G79	7.62-MM Machine Gun, M60D

## TM 9-1005-224-24P

b. *Assembly Instructions.* Detailed assembly instructions for items source coded to be assembled from component spare/repair parts are found in TM 9-1005-224-24. Items that makeup the assembly are listed immediately following the assembly item entry or reference is made to an applicable figure.

c. *Kits.* Line item entries for repair parts kits appear in a group in section II (see table of contents).

d. *Index Numbers.* Items which have the word BULK in the figure column will have an index number shown in the item number column. This index number is a cross-reference between the National Stock Number/Part Number index and the bulk material list in section II.

e. *Associated Publications.* The publication(s) listed below pertain to machine gun, M60; tripod, M122 and machine gun, M60D and its components:

<i>Publication</i>	<i>Short Wire</i>
TM 9-1005-224-24	Machine Gun, 7.62-mm, M60 W/E Mount, Tripod, Machine Gun, 7.62-mm, M122 Machine Gun, 7.62-mm, M60D W/E

## 6. HOW TO LOCATE REPAIR PARTS.

a. *When National Stock Number or Part Number is Not Known:*

(1) First. Using the table of contents, determine the assembly group or subassembly group to which the item belongs. This is necessary since figures are prepared for assembly groups and subassembly groups, and listings are divided into the same groups.

(2) Second. Find the figure covering the functional group or subfunctional group to which the item belongs.

(3) Third. Identify the item on the figure and note the item number.

(4) Fourth. Refer to the Repair Parts List for the figure to find the part number for the item number noted on the figure.

(5) Fifth. Refer to the Part Number Index to find the NSN, if assigned.

b. *When National Stock Number or Part Number is Known:*

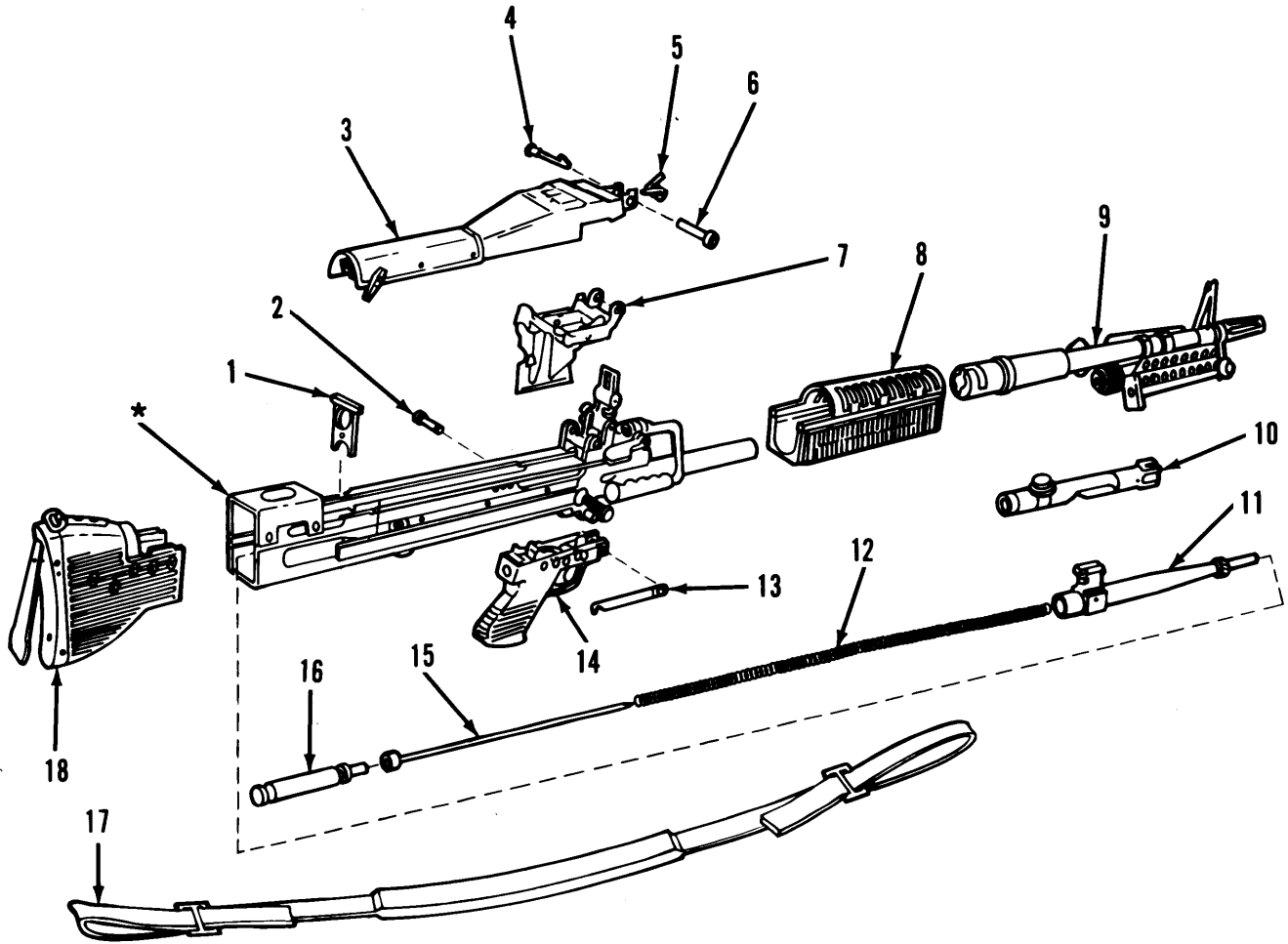
(1) First. Using the index of National stock numbers and part numbers, find the pertinent National stock number or part number. The NSN index is in National Item Identification Number (NIIN) sequence (see 4a(1)). The part numbers in the PART NUMBER INDEX are listed in ascending alphanumeric sequence (see b). Both indexes cross-reference you to the illustration figure and item number of the item you are looking for.

(2) Second. After finding the figure and item number, verify that the item is the one you're looking for, then locate the item number in the repair parts list for the figure.

7. **ABBREVIATIONS.** Not applicable.



Section II. REPAIR PARTS LIST



\*FURTHER DISASSEMBLY  
ON FIG. 2

Figure 1. Machine gun, 7.62-mm M60 and M60D (M60 major assemblies).

## SECTION II

TM9-1005-224-24P

(1) ITEM NO	(2) SMR CODE	(3) FSCM	(4) PART NUMBER	(5) DESCRIPTION AND USABLE ON CODE (UOC)	(6) QTY
				GROUP 00: MACHINE GUN, 7.62-MM M60 AND M60D (M60 MAJOR ASSEMBLIES) 7269100 AND 11699750	
				FIG.1 MACHINE GUN, 7.62-MM (M60 MAJOR ASSEMBLIES)	
1	PAFZZ	19204	11699786	YOKE,BUFFER RETAINING UOC:G79,023	1
2	PAOZZ	19204	7269205	PIN,GROOVED,HEADED UOC:G79,023	2
3	AFFFF	19204	7269114	COVER ASSEMBLY (SEE FIG.15 FOR ASSEMBLY BREAKDOWN) UOC:G79,023	1
4	PAFZZ	19204	7269243	LATCH,HINGE PIN UOC:G79,023	1
5	PAFZZ	19205	7269301	SPRING,HELICAL UOC:G79,023	1
6	PAFZZ	19204	7269247	PIN,HINGE,COVER UOC:G79,023	1
7	AOOOO	19204	8448237	TRAY ASSEMBLY AND HANGER ASSEMBLY (SEE FIG.19 FOR ASSEMBLY BREAKDOWN). UOC:023	1
8	PAFFF	19204	11010430	FOREARM ASSEMBLY (SEE FIG.22 FOR ASSEMBLY BREAKDOWN) UOC:023	1
9	AFFFF	19204	7269027	BARREL ASSEMBLY,GUN AND BIPOD ASSEMBLY (SEE FIG.11 FOR ASSEMBLY BREAKDOWN) UOC:G79,023	1
10	AFFFF	19200	11010357	BOLT ASSEMBLY, BREECH (SEE FIG.7 FOR ASSEMBLY BREAKDOWN) UOC:G79,023	1
11	PAFFF	19200	9362510	ROD ASSEMBLY,OPERATING (SEE FIG.8 FOR ASSEMBLY BREAKDOWN) REPLACES P/ N 11686309 UOC:G79,023	1
12	PAOZZ	19200	9362511	SPRING,HELICAL,COMP REPLACES P/N 7269303 UOC:G79,023	1
13	PAOZZ	19204	7792398	SPRING,FLAT UOC:023	1
14	AFOFF	19204	7269202	GRIP ASSEMBLY, TRIGGER MECHANISM (SEE FIG.9 FOR ASSEMBLY BREAKDOWN) UOC:023	1
15	PAOZZ	19200	9362512	GUIDE ASSEMBLY, DRIVE REPLACES 7269199 UOC:G79,023	1
16	PAOZZ	19204	11010518	BUFFER ASSEMBLY, HYDRAULIC UOC:G79,023	1
17	PAOZZ	19204	12002983	SLING,SMALL ARMS	1

## SECTION II

TM9-1005-224-24P

(1) ITEM NO	(2) SMR CODE	(3) FSCM	(4) PART NUMBER	(5) DESCRIPTION AND USABLE ON CODE (UOC)	(6) QTY
18	PAFFF	19204	11686711	UOC:023 STOCK,GUN,SHOULDER (SEE FIG.5 FOR ASSEMBLY BREAKDOWN) UOC:023	1
END OF FIGURE					



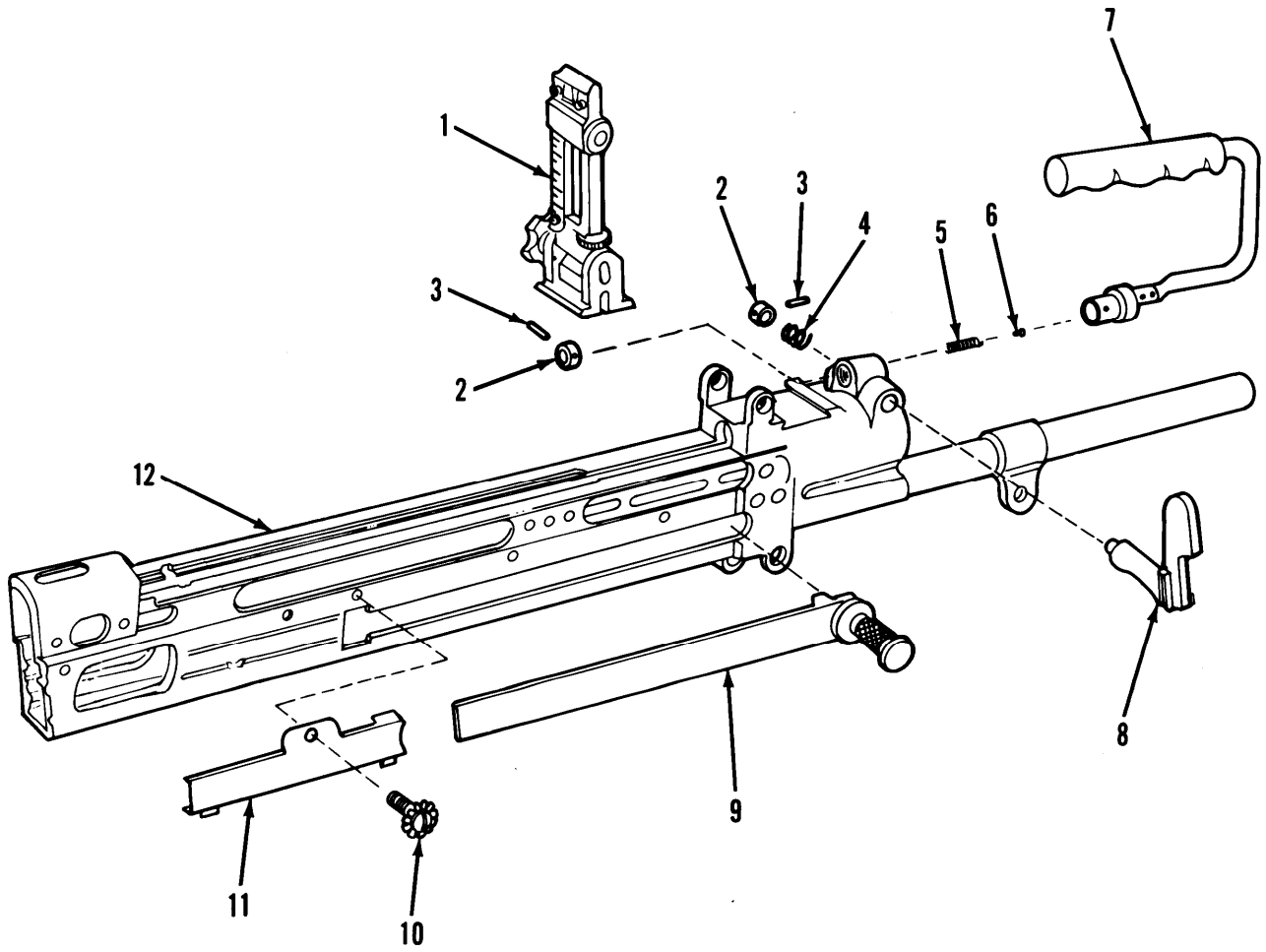


Figure 2. Machine gun, 7.62-mm M60 and M60D (M60 minor components).

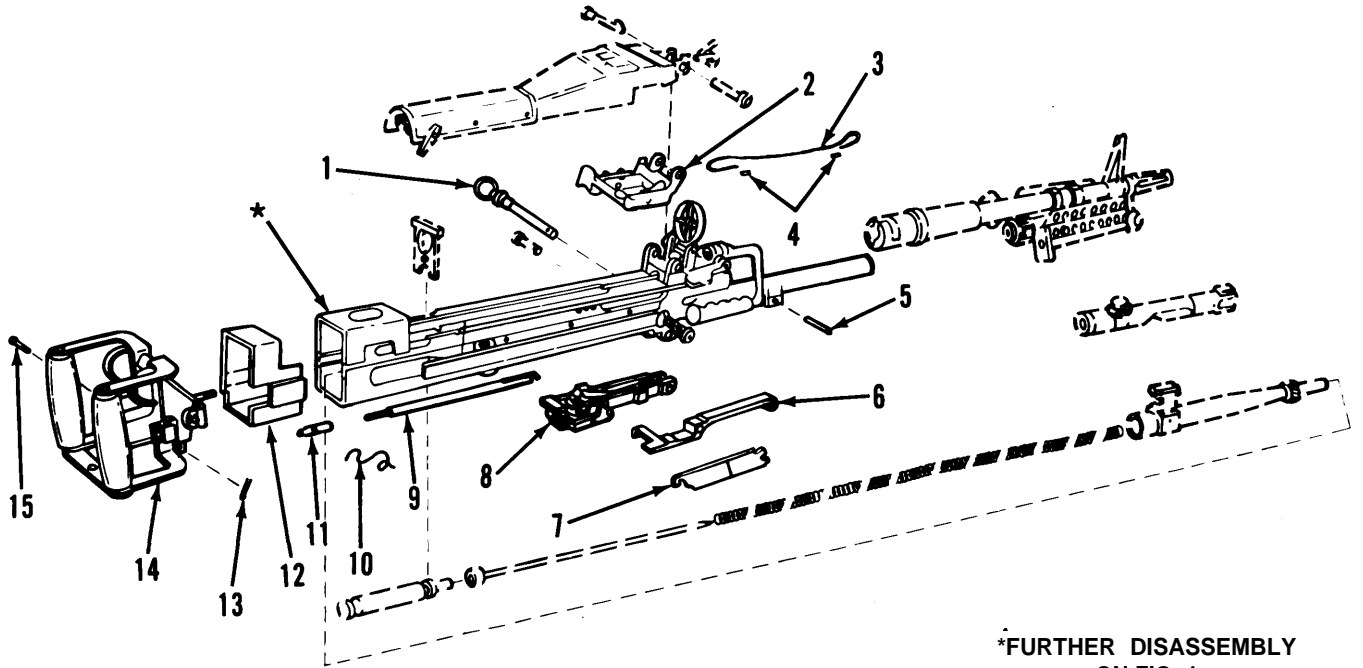


## SECTION II

TM9-1005-224-24P

(1) ITEM NO	(2) SMR CODE	(3) FSCM	(4) PART NUMBER	(5) DESCRIPTION AND USABLE ON CODE (UOC)	(6) QTY
				GROUP 00: MACHINE GUN, 7.62-MM M60 AND M60D (M60 MINOR COMPONENTS) 7269100 AND 11699750	
				FIG.2 MACHINE GUN, 7.62-MM (M60 MINOR COMPONENTS)	
1	PAFFF	19204	7791437	SIGHT,REAR (SEE FIG.23 FOR ASSEMBLY BREAKDOWN) UOC:023	1
2	PAOZZ	19205	11010377	RING,BARREL LOCK UOC:G79,023	2
3	PAOZZ	96906	MS39086-81	PIN,SPRING UOC:G79,023	2
4	PAOZZ	19204	11010197	SPRING,HELICAL UOC:G79,023	1
5	PAOZZ	19205	7269302	SPRING,HELICAL UOC:G79,023	1
6	PAOZZ	19204	7269250	PLUNGER,DETENT UOC:G79,023	1
7	PAOZZ	19205	7269231	HANDLE, CARRYING UOC:G79,023	1
8	PAOZZ	19204	11010184	LOCK,BARREL UOC:G79,023	1
9	AFFFF	19205	7791621	HANDLE ASSEMBLY, COCKING (SEE FIG.26 FOR ASSEMBLY BREAKDOWN) UOC:G79,023	1
10	PAOZZ	19204	7790559	SCREW,ASSEMBLED UOC:G79,023	1
11	PAOZZ	19204	11010155	GUIDE,COCKING HANDLE UOC:G79,023	1
12	XADDD	19204	11686308	RECEIVER,GUN (SEE FIG.27 FOR ASSEMBLY BREAKDOWN) UOC:023	1

END OF FIGURE



\*FURTHER DISASSEMBLY ON FIG. 4

NOTE: PHANTOMED PARTS ARE COMMON TO M60 MODEL. SEE FIG. 1.

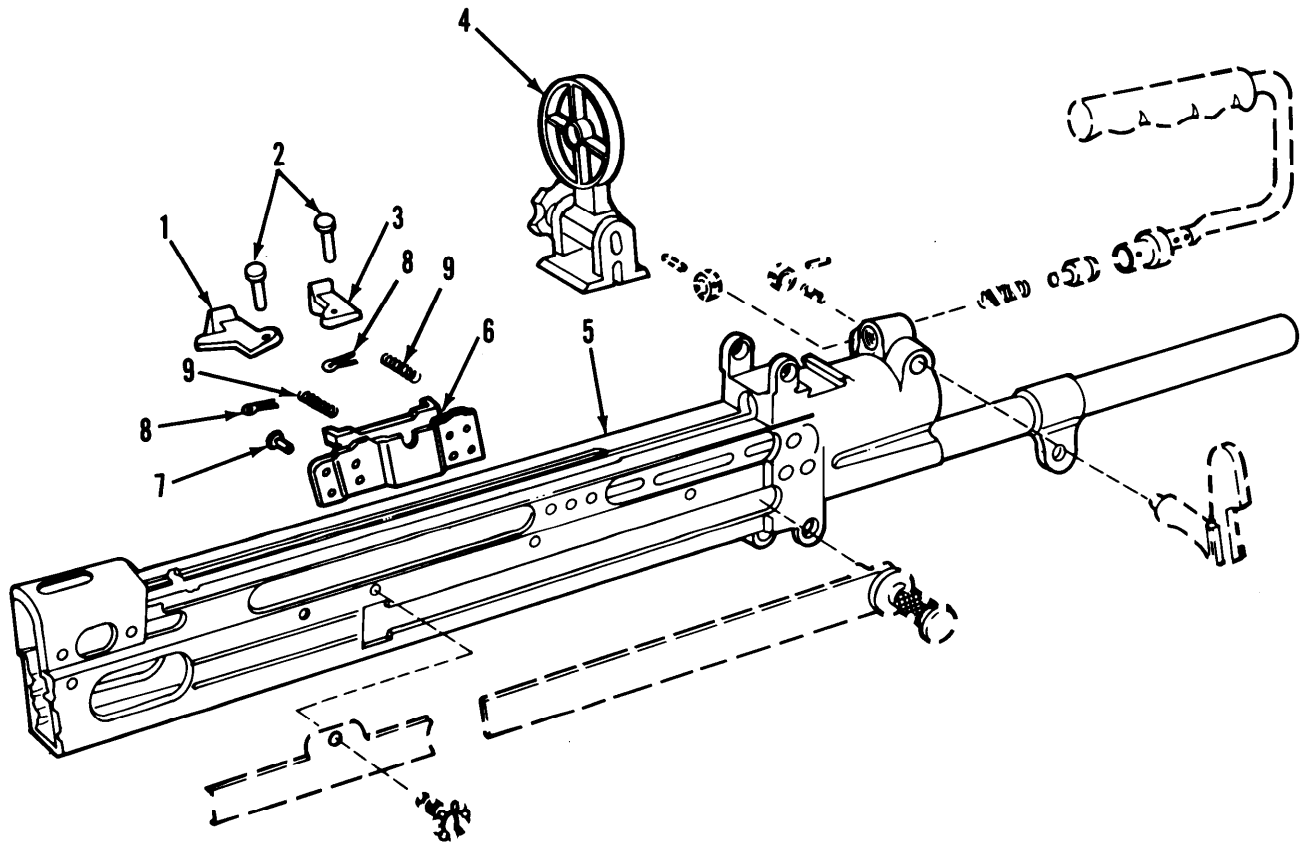
Figure 3. Machine gun, 7.62-mm M60 and M60D (M60D major assemblies).

## SECTION II

TM9-1005-224-24P

(1) ITEM NO	(2) SMR CODE	(3) FSCM	(4) PART NUMBER	(5) DESCRIPTION AND USABLE ON CODE (UOC)	(6) QTY
				GROUP 00: MACHINE GUN, 7.62-MM M60 AND M60D (M60D MAJOR ASSEMBLIES) 7269100 AND 11699750	
				FIG.3 MACHINE GUN,7.62-MM (M60D MAJOR ASSEMBLIES)	
1	PAOZZ	96906	MS17990C519	PIN,QUICK RELEASE UOC:G79	1
2	AOOOO	19205	7792096	TRAY ASSEMBLY, CARTRIDGE FEED (SEE FIG.21 FOR ASSEMBLY BREAKDOWN) UOC:G79	1
3	PAOZZ	19205	8427869-7	WIRE ROPE ASSEMBLY UOC:G79	1
4	PAOZZ	19204	8427871	SLEEVE,SWAGING UOC:G79	2
5	PAOZZ	96906	MS16562-151	PIN,SPRING UOC:G79	1
6	PAOZZ	19205	11699793	ADAPTER,GUN UOC:G79	1
7	PAOZZ	19204	11699785	SPRING,FLAT UOC:G79	1
8	AOOOO	19205	11699773	SEAR AND SAFETY HOUSING (SEE FIG.10 FOR ASSEMBLY BREAKDOWN) UOC:G79	1
9	PAFZZ	19200	11699790	LINK AND SPRING, SEAR ASSEMBLY UOC:G79	1
10	MOOZZ	19204	NPNLW	WIRE, SAFETY 0.032 IN. CUT FROM 9505-00-293-4208 (NSN) UOC:G79,023	1
11	PAOZZ	19205	11699789	NUT,SEAR LINK UOC:G79	1
12	PAOZZ	19204	11699787	BOOT,DUST AND MOISTURE UOC:G79	1
13	PAOZZ	96906	MS24665-18	PIN,COTTER UOC:G79,023	2
14	PAOOO	19200	11699751	GRIP AND TRIGGER ASSEMBLY (SEE FIG.6 FOR ASSEMBLY BREAKDOWN) UOC:G79	1
15	PAOZZ	19205	11699788	PIN,GROOVED,HEADED UOC:G79	1

END OF FIGURE



NOTE: PHANTOMED PARTS ARE  
COMMON TO M60 MODEL.  
SEE FIG. 2.

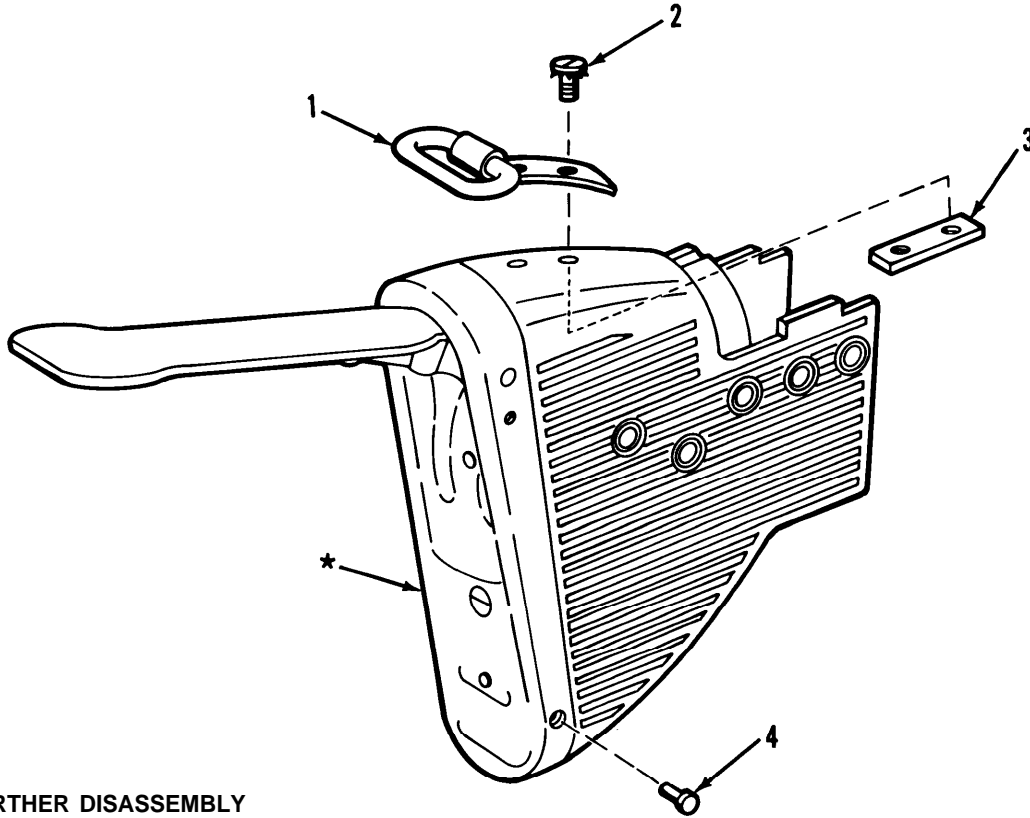
Figure 4. Machine gun, 7.62-mm M60 and M60D (M60D minor components).

## SECTION II

TM9-1005-224-24P

(1) ITEM NO	(2) SMR CODE	(3) FSCM	(4) PART NUMBER	(5) DESCRIPTION AND USABLE ON CODE (UOC)	(6) QTY
				GROUP 00: MACHINE GUN, 7.62-MM M60 AND M60D (M60D MINOR COMPONENTS) 7269100 AND 11699750	
				FIG.4 MACHINE GUN,7.62-MM (M60D MINOR COMPONENTS)	
1	PAFZZ	19204	7790554	LEVER,LOCK-RELEASE UOC:G79	1
2	PAFZZ	19204	7792069	PIN,STRAIGHT,HEADED UOC:G79	2
3	PAFZZ	19204	7790553	PAWL UOC:G79	1
4	AFFFF	19205	11699796	SIGHT,REAR (SEE FIG.25 FOR ASSEMBLY BREAKDOWN) UOC:G79	1
5	XADDD	19205	11699805	RECEIVER ASSEMBLY, GUN (SEE FIG.28 FOR ASSEMBLY BREAKDOWN) UOC:G79	1
6	PAFZZ	19204	11686976	BRACKET,MAGAZINE UOC:G79	1
7	PAFZZ	19204	7792086	RIVET,SOLID UOC:G79	4
8	PAFZZ	96906	MS24665-18	PIN,COTTER UOC:G79	2
9	PAFZZ	19204	7790551	SPRING,HELICAL UOC:G79	2

END OF FIGURE



\*NO FURTHER DISASSEMBLY AUTHORIZED.

Figure 5. Shoulder gun stock assembly (M60 only).

(1) ITEM NO	(2) SMR CODE	(3) FSCM	(4) PART NUMBER	(5) DESCRIPTION AND USABLE ON CODES (UOC)	(6) QTY
-------------------	--------------------	-------------	-----------------------	--	------------

GROUP 01: SHOULDER GUN STOCK ASSY  
(M60 ONLY) 11686711

FIG.5 M60 SHOULDER GUN  
STOCK ASSEMBLY

1	PAOZZ	19204	7267089	SWIVEL, SLING, SMALL . . . . .	1
				UOC :023	
2	PAOZZ	19205	11010365	SCREW, ASSEMBLED . . . . .	2
				UOC :023	
3	PAOZZ	19204	11010369	SPACER, PLATE . . . . .	1
				UOC :023	
4	PAFZZ	19205	11686722	RIVET, SOLID . . . . .	2
				UOC :023	

END OF FIGURE

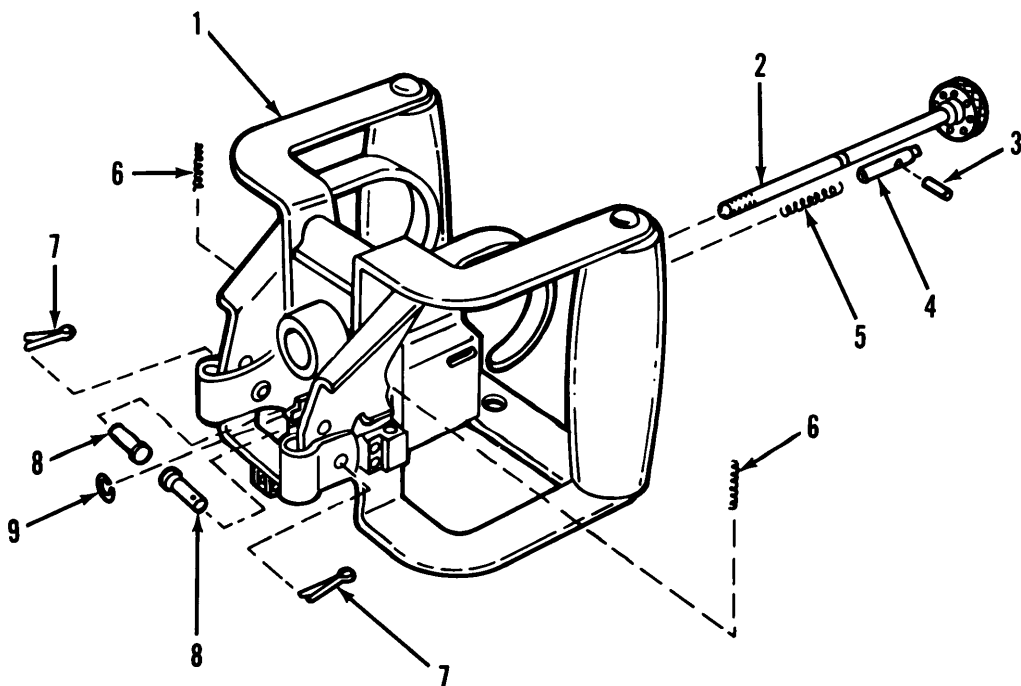


Figure 6. Grip and trigger assembly (M60D only).

(1) ITEM NO	(2) SMR CODE	(3) FSCM	(4) PART NUMBER	(5) DESCRIPTION AND USABLE ON CODES (UOC)	(6) QTY
-------------------	--------------------	-------------	-----------------------	--	------------

GROUP 02: GRIP AND TRIGGER ASSEMBLY  
(M60D ONLY) 11699751

FIG.6 M60D GRIP AND TRIGGER ASSEMBLY

1	XAOZZ	19200	11699752	SPADE GRIP TRIGGER AND FRAME ASSEMBLY . . . . . UOC:G79	1
2	PAOZZ	19205	11699769	KNOB AND PIN ASSEMBLY . . . . . UOC:G79	1
3	PAOZZ	96906	MS16562-127	PIN,SPRING . . . . . UOC : G79	1
4	PAOZZ	19205	11699768	PIN,SHOULDER . . . . . UOC : G79	1
5	PAOZZ	19204	11699767	SPRING,HELICAL COMPRESSION . . . . . UOC : G79	1
6	PAOZZ	19204	11699756	SPRING,HELICAL . . . . . UOC:G79	2
7	PAOZZ	96906	MS24665-86	PIN,COTTER . . . . . UOC:G79	2
8	PAOZZ	19205	11699757	PIN,GROOVED,HEADED . . . . . UOC : G79	2
9	PAOZZ	19205	11699772	RING,RETAINING . . . . . UOC:G79	1

END OF FIGURE

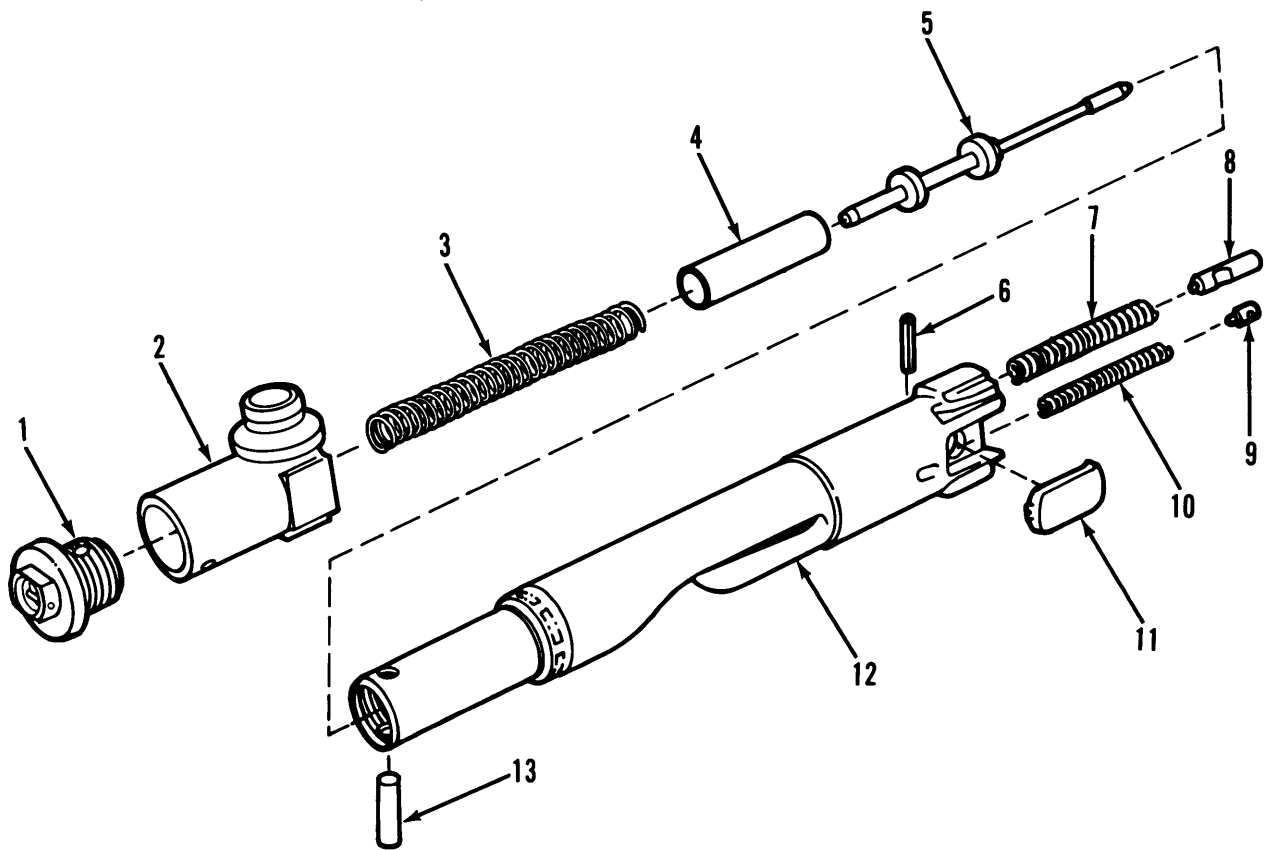


Figure 7. Breech bolt assembly.



## SECTION II

TM9-1005-224-24P

(1) ITEM NO	(2) SMR CODE	(3) FSCM	(4) PART NUMBER	(5) DESCRIPTION AND USABLE ON CODE (UOC)	(6) QTY
GROUP 03: BREECH BOLT ASSEMBLY 11010357					
FIG.7 BREECH BOLT ASSEMBLY					
1	PAOZZ	19200	9362505	PLUG ASSEMBLY,BOLT REPLACES P/N 7791523 UOC:G79,023	1
2	PAOZZ	19204	7269063	ACTUATOR ASSEMBLY, CAM UOC:G79,023	1
3	PAOZZ	19204	7269087	SPRING,HELICAL UOC:G79,023	1
4	PAOZZ	19204	7269065	GUIDE,FIRING PIN UOC:G79,023	1
5	PAFZZ	19204	11010376	PIN,FIRING UOC:G79,023	1
6	PAOZZ	96906	MS39086-81	PIN,SPRING UOC:G79,023	1
7	PAOZZ	19204	7269085	SPRING,HELICAL UOC:G79,023	1
8	PAOZZ	19204	11010375	EJECTOR,CARTRIDGE UOC:G79,023	1
9	PAOZZ	19204	7269083	PLUNGER,EXTRACTOR UOC:G79,023	1
10	PAOZZ	19204	7269086	SPRING,HELICAL UOC:G79,023	1
11	PAOZZ	19204	7790907	EXTRACTOR,CARTRIDGE UOC:G79,023	1
12	PAFZZ	19204	11010358	BOLT,BREECH UOC:G79,023	1
13	PAOZZ	19204	7792920	PIN,STRAIGHT, HEADLESS UOC:G79,023	1

END OF FIGURE

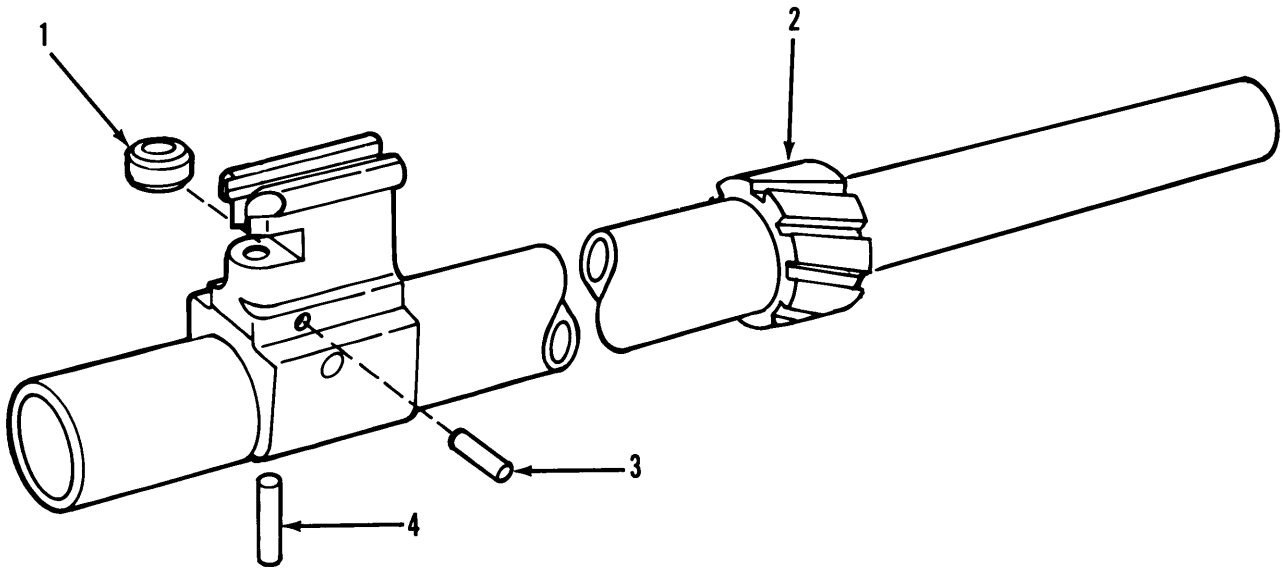


Figure 8. Operating rod assembly.

(1) ITEM NO	(2) SMR CODE	(3) FSCM	(4) PART NUMBER	(5) DESCRIPTION AND USABLE ON CODES(UOC)	(6) QTY
-------------------	--------------------	-------------	-----------------------	---	------------

GROUP 04: OPERATING ROD ASSEMBLY  
9362510

FIG.8 OPERATING ROD ASSEMBLY

1	PAFZZ	19200	9362506	ROLLER, YOKE REPLACES P/N 7790942. . . . .	1
				UOC:G79,023	
2	XAFZZ	19200	9362509	YOKE AND TUBE ASSEMBLY REPLACES P/	1
				N 7790944 . . . . .	
				UOC:G79,023	
3	PAFZZ	96906	MS51923-105	PIN, SPRING . . . . .	1
				UOC:G79,023	
4	PAFZZ	19200	9362507	PIN, STRAIGHT, HEADLESS REPLACES P/	1
				N11010215 . . . . .	
				UOC:G79,023	

END OF FIGURE



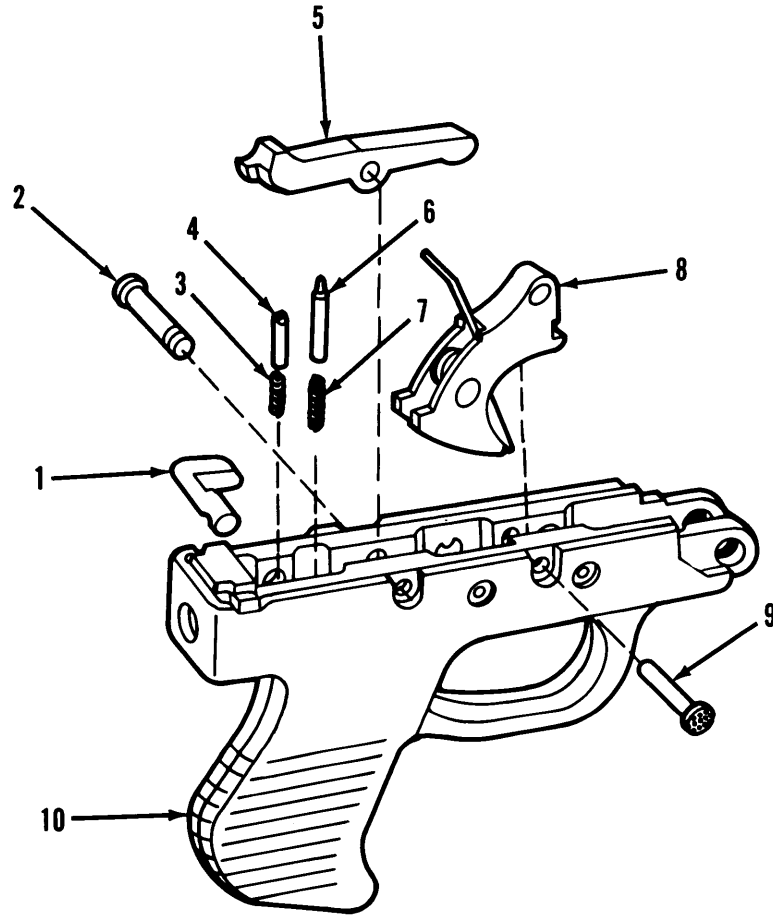


Figure 9. Trigger mechanism grip assembly (M60 only).

## SECTION II

TM9-1005-224-24P

(1) ITEM NO	(2) SMR CODE	(3) FSCM	(4) PART NUMBER	(5) DESCRIPTION AND USABLE ON CODE (UOC)	(6) QTY
GROUP 05:TRIGGER MECHANISM GRIP ASSY (M60 ONLY) 7269202					
FIG.9 TRIGGER MECHANISM GRIP ASSY					
1	PAOZZ	19204	7269415	SAFETY, SMALL ARMS UOC:023	1
2	PAOZZ	19204	7269205	PIN, GROOVED, HEADED UOC:023	1
3	PAOZZ	19204	7269210	SPRING, HELICAL UOC:023	1
4	PAOZZ	19204	7269206	PLUNGER, SAFETY UOC:023	1
5	PAOZZ	19204	7269209	SEAR UOC:023	1
6	PAOZZ	19204	7269207	PLUNGER, SEAR UOC:023	1
7	PAOZZ	19204	7269211	SPRING, HELICAL UOC:023	1
8	PAOZZ	19204	7269212	TRIGGER ASSEMBLY UOC:023	1
9	PAOZZ	19205	7269204	PIN, SHOULDER, HEADED UOC:023	1
10	PAFZZ	19204	7269203	HOUSING, TRIGGER UOC:023	1

END OF FIGURE

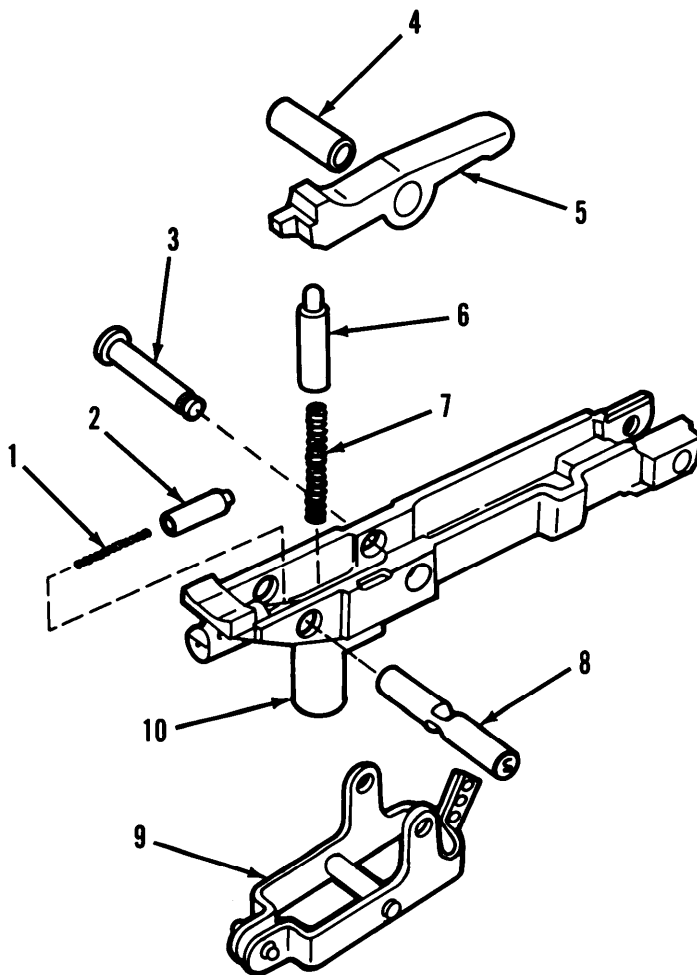


Figure 10. Sear and safety housing assembly (M60D only).

## SECTION II

TM9-1005-224-24P

(1) ITEM NO	(2) SMR CODE	(3) FSCM	(4) PART NUMBER	(5) DESCRIPTION AND USABLE ON CODE (UOC)	(6) QTY
				GROUP 06: SEAR AND SAFETY HOUSING ASSEMBLY (M60D ONLY) 11699773	
				FIG.10 M60D SEAR AND SAFETY HOUSING ASSY	
1	PAOZZ	19204	11699775	SPRING,HELICAL UOC:G79	1
2	PAOZZ	19205	11699776	PLUNGER,SAFETY UOC:G79	1
3	PAOZZ	19205	11699779	PIN,GROOVED,HEADED UOC:G79	1
4	PAOZZ	19204	11699778	BUSHING,SLEEVE UOC:G79	1
5	PAOZZ	19204	7269209	SEAR UOC:G79	1
6	PAOZZ	19204	7269207	PLUNGER,SEAR UOC:G79	1
7	PAOZZ	19204	7269211	SPRING,HELICAL UOC:G79	1
8	PAOZZ	19204	11699777	SAFETY,SMALL ARMS UOC:G79	1
9	PAOZZ	19205	11699780	ACTIVATOR,SEAR UOC:G79	1
10	PAOZZ	19205	11699774	HOUSING,SEAR UOC:G79	1

END OF FIGURE

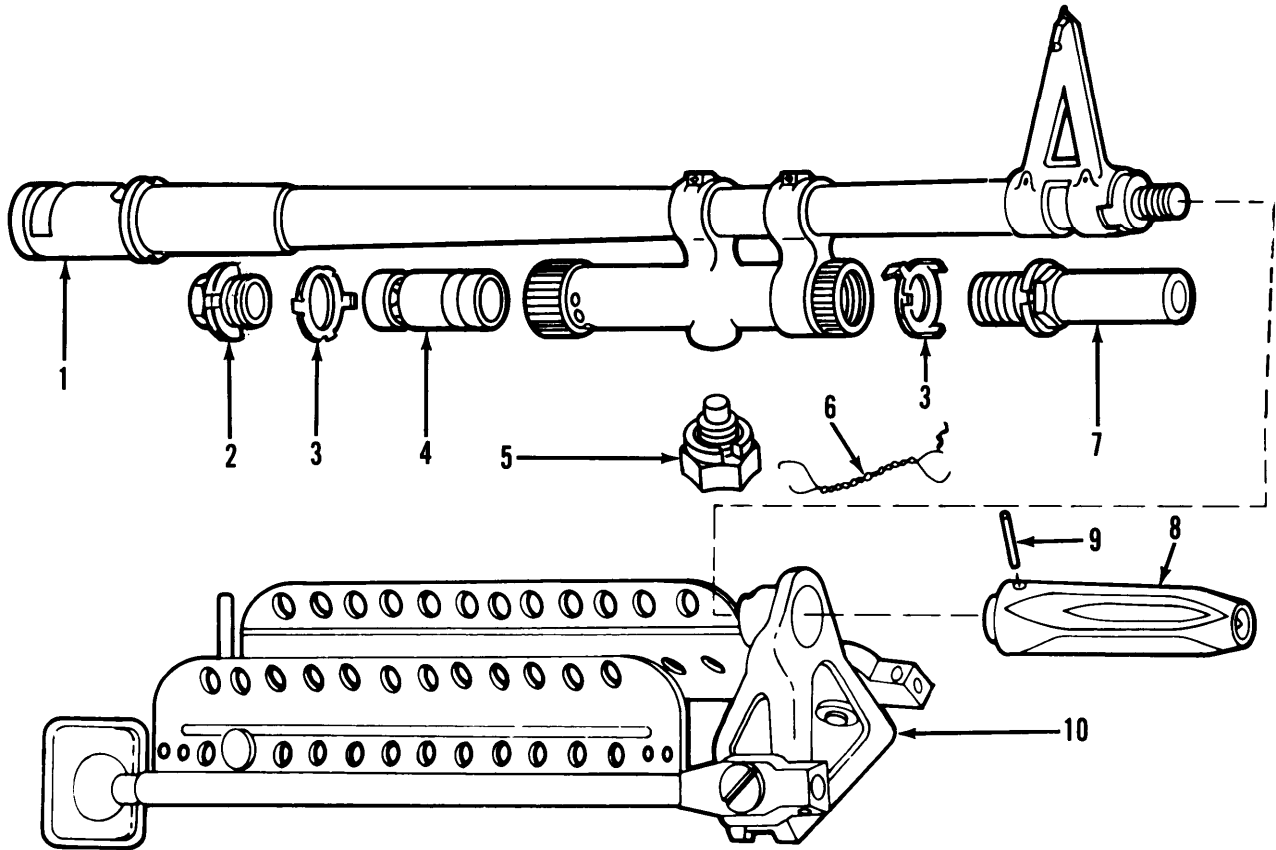


Figure 11. Barrel and bipod assembly.



## SECTION II

TM9-1005-224-24P

(1) ITEM NO	(2) SMR CODE	(3) FSCM	(4) PART NUMBER	(5) DESCRIPTION AND USABLE ON CODE (UOC)	(6) QTY
GROUP 07:BARREL AND BIPOD ASSEMBLY 7269027					
FIG.11 BARREL AND BIPOD ASSEMBLY					
1	PAFZZ	19204	7269028	BARREL ASSEMBLY,GUN UOC:G79,023	1
2	PAFZZ	19204	7269031	BUSHING,MACHINE UOC:G79,023	1
3	PAOZZ	19204	7269035	WASHER,KEY UOC:G79,023	2
4	PAFZZ	19204	7791247	PISTON,GAS UOC:G79,023	1
5	PAFZZ	19200	9362515	PLUG ASSEMBLY,GAS REPLACES P/N 7792093 UOC:G79,023	1
6	MOOZZ	19204	NPNLW	WIRE,SAFETY 0.032 IN. CUT FROM NSN 9505-00-293-4208 UOC:G79,023	1
7	PAFZZ	19204	7269030	PLUG,VENT UOC:G79,023	1
8	PAFZZ	19204	7269034	SUPPRESSOR,FLASH UOC:G79,023	1
9	PAFZZ	96906	MS51838-88	PIN,STRAIGHT UOC:G79,023	1
10	AFFFF	19204	7793009	BIPOD,MACHINE GUN (SEE FIG.12 FOR ASSEMBLY BREAKDOWN) UOC:G79,023	1

END OF FIGURE

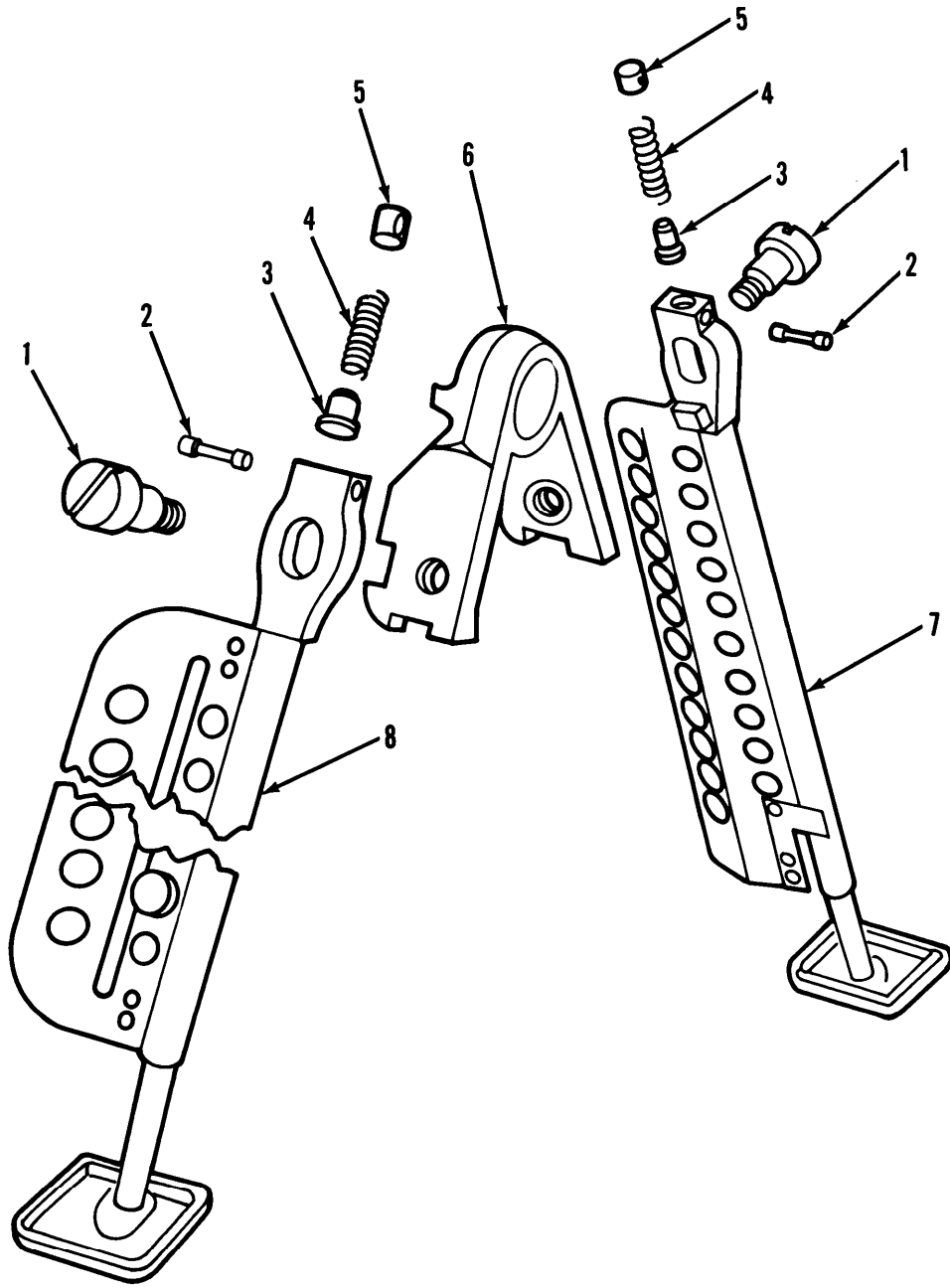


Figure 12. Machine gun bipod.

## SECTION II

TM9-1005-224-24P

(1) ITEM NO	(2) SMR CODE	(3) FSCM	(4) PART NUMBER	(5) DESCRIPTION AND USABLE ON CODE (UOC)	(6) QTY
				GROUP 0701:MACHINE GUN BIPOD 7793009	
				FIG.12 MACHINE GUN BIPOD	
1	PAFZZ	19204	7269051	SCREW, SHOULDER UOC:G79,023	2
2	PAFZZ	19204	7269048	PIN, GROOVED UOC:G79,023	2
3	PAFZZ	19204	7269050	PIN, STRAIGHT, HEADED UOC:G79,023	2
4	PAFZZ	19204	7269052	SPRING, HELICAL UOC:G79,023	2
5	PAFZZ	19204	7269053	RETAINER, SPRING LEG UOC:G79,023	2
6	PAFZZ	19204	7793010	PIVOT, BIPOD ASSEMBLY UOC:G79,023	1
7	PAFFF	19204	7269046	LEG, MACHINE GUN (LEFT) (SEE FIG.14 FOR ASSEMBLY BREAKDOWN) UOC:G79,023	1
8	PAFFF	19204	7269047	LEG, MACHINE GUN (RIGHT) (SEE FIG.13 FOR ASSEMBLY BREAKDOWN) UOC:G79,023	1

END OF FIGURE

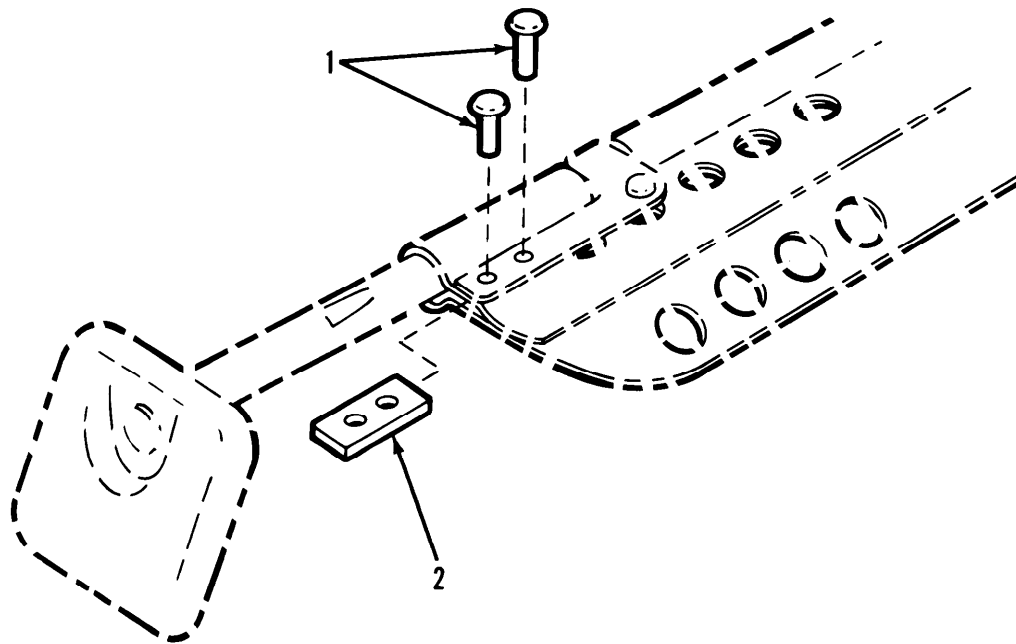


Figure 13. Machine gun leg (right).

(1) ITEM NO	(2) SMR CODE	(3) FSCM	(4) PART NUMBER	(5) DESCRIPTION AND USABLE ON CODES(UOC)	(6) QTY
GROUP 070101 MACHINE GUN LEG (RIGHT) 7269047					
FIG.13 MACHINE GUN LEG (RIGHT)					
1	PAFZZ	19204	7269058	RIVET,SOLID . . . . .	2
				UOC:G79,023	
2	PAFZZ	19204	7269057	KEY,MACHINE . . . . .	1
				UOC:G79,023	

END OF FIGURE

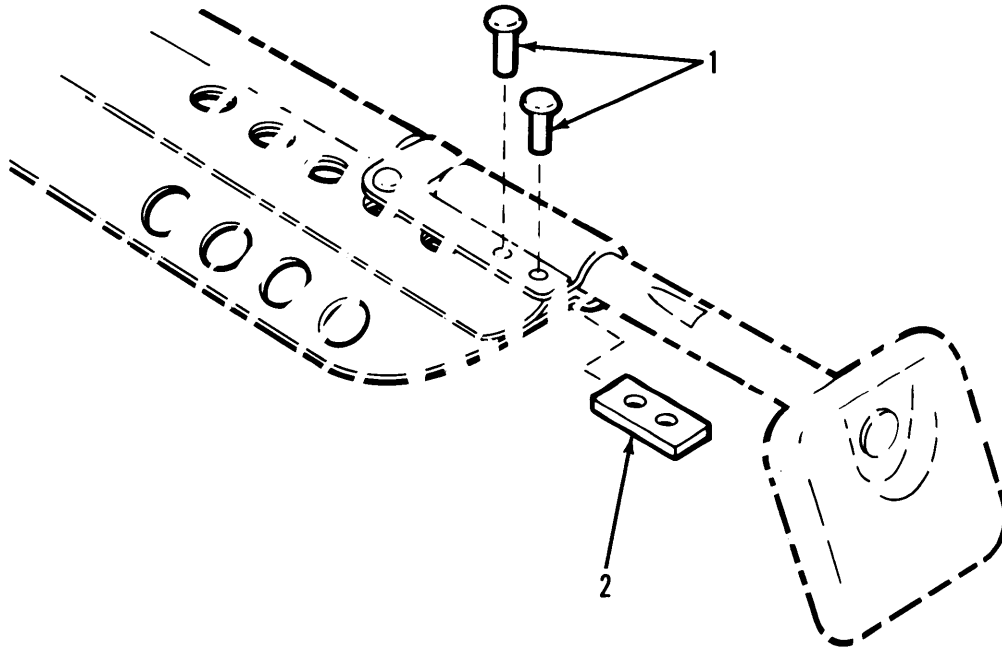


Figure 14. Machine gun leg (left).

(1) ITEM NO	(2) SMR CODE	(3) FSCM	(4) PART NUMBER	(5) DESCRIPTION AND USABLE ON CODES (UOC)	(6) QTY
GROUP 070102:MACHINE GUN LEG (LEFT) 7269046					
FIG.14 MACHINE GUN LEG (LEFT)					
1	PAFZZ	19204	7269058	RIVET,SOLID . . . . .	2
				UOC:G79,023	
2	PAFZZ	19204	7269057	KEY,MACHINE . . . . .	1
				UOC:G79,023	

END OF FIGURE

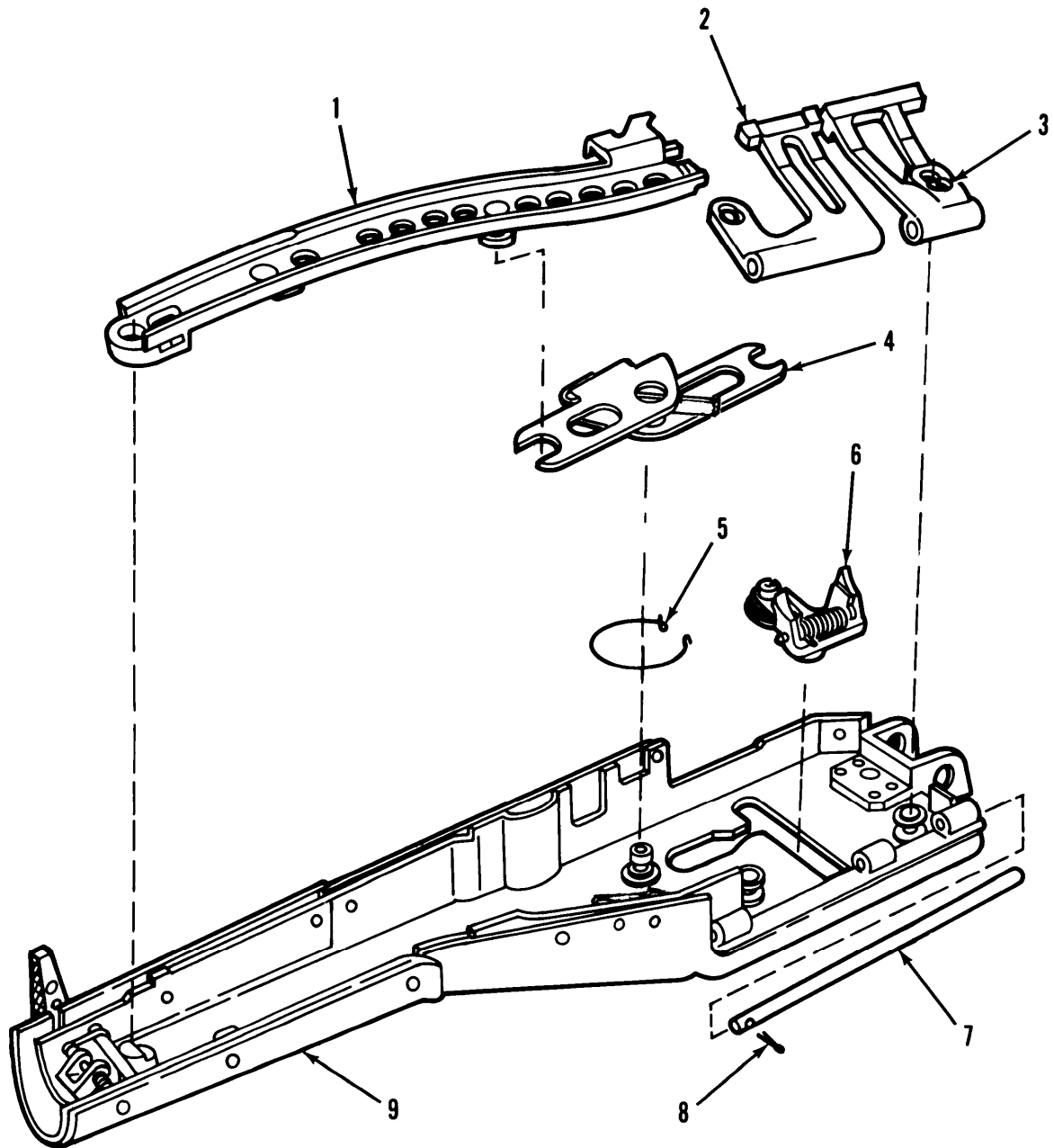


Figure 15. Cover and lever assembly.

## SECTION II

TM9-1005-224-24P

(1) ITEM NO	(2) SMR CODE	(3) FSCM	(4) PART NUMBER	(5) DESCRIPTION AND USABLE ON CODE (UOC)	(6) QTY
GROUP 08:COVER ASSEMBLY 7269114					
FIG.15 COVER AND LEVER ASSEMBLY					
1	PAFFF	19204	11699814	CAM ASSEMBLY,FEED (SEE FIG.16 FOR ASSEMBLY BREAKDOWN) UOC:G79,023	1
2	PAFZZ	19204	7269117	GUIDE,CARTRIDGE REAR UOC:G79,023	1
3	PAFZZ	19204	7269116	GUIDE,CARTRIDGE FRONT UOC:G79,023	1
4	AFFFF	19204	7269119	LEVER ASSEMBLY,FEED (SEE FIG.16 FOR ASSEMBLY BREAKDOWN) UOC:G79,023	1
5	PAOZZ	19204	11686315	SPRING,HELICAL UOC:G79,023	1
6	PAFFF	19204	7269120	PAWL ASSEMBLY,CAM FEED (SEE FIG.17 FOR ASSEMBLY BREAKDOWN) UOC:G79,023	1
7	PAFZZ	19204	11010152	SHAFT,STRAIGHT UOC:G79,023	1
8	PAOZZ	96906	MS24665-18	PIN,COTTER UOC:G79,023	1
9	PAFHH	19204	7269118	HOUSING ASSEMBLY, COVER (SEE FIG. 18 FOR ASSEMBLY BREAKDOWN) UOC:G79,023	1
END OF FIGURE					

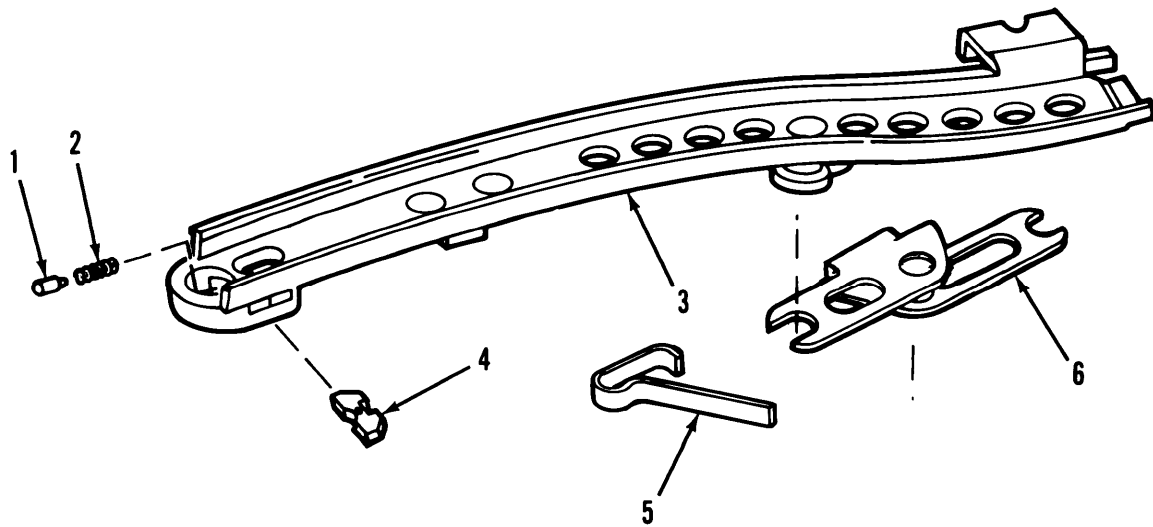


Figure 16. Feed cam assembly and feed lever assembly.

(1)	(2)	(3)	(4)	(5)	(6)
ITEM NO	SMR CODE	FSCM	PART NUMBER	DESCRIPTION AND USABLE ON CODES (UOC)	QTY
GROUP 0801: FEED CAM ASSEMBLY 11699814 AND 0802: FEED LEVEL ASSEMBLY 7269119					
FIG. 16 FEED CAM ASSEMBLY AND FEED LEVER ASSEMBLY					
1	PAFZZ	19204	7269123	PLUNGER,RETAINER . . . . .	1
				UOC:G79,023	
2	PAFZZ	19204	7269125	SPRING,HELICAL . . . . .	1
				UOC:G79,023	
3	XAFZZ	19204	11699817	CAM ASSEMBLY, . . . . .	1
				UOC:G79,023	
4	PAFZZ	19204	7269124	RETAINER,FEED CAM . . . . .	1
				UOC:G79,023	
5	PAFZZ	19204	7269146	..CLIP,SPRING LEVER . . . . .	1
				UOC:G79,023	
6	PAFZZ	19204	7269145	..LEVER,FEED . . . . .	1
				UOC:G79,023	

END OF FIGURE



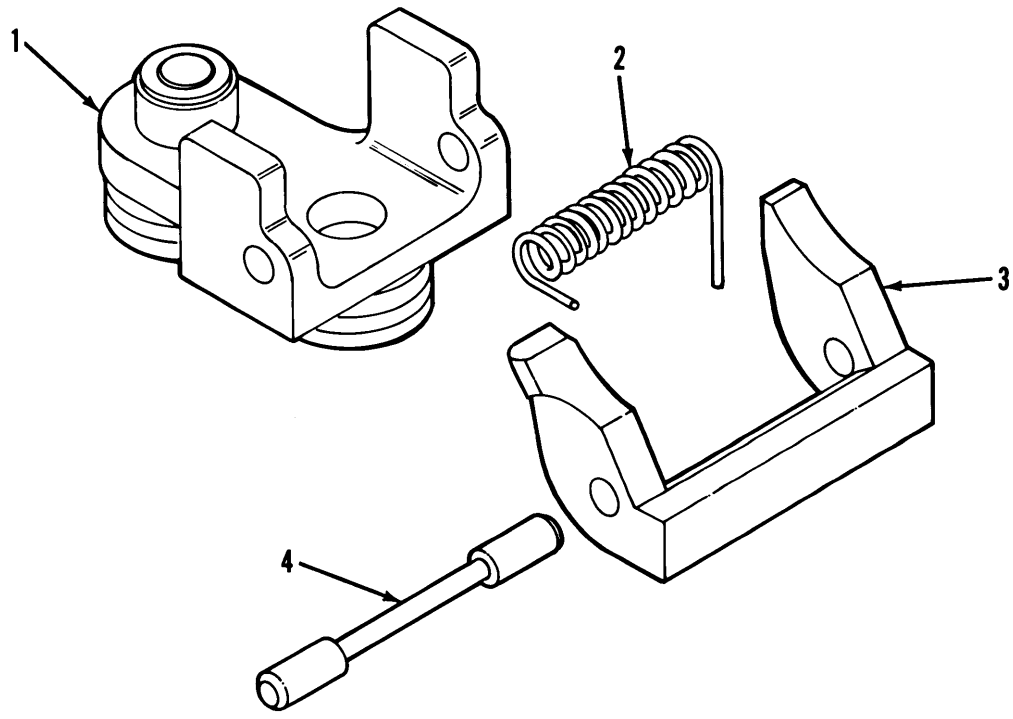


Figure 17. Feed pawl assembly.

(1) ITEM NO	(2) SMR CODE	(3) FSCM	(4) PART NUMBER	(5) DESCRIPTION AND USABLE ON CODES(UOC)	(6) QTY
GROUP 0803:FEED PAWL ASSEMBLY 7269120					
FIG.17 FEED PAWL ASSEMBLY					
1	XAFZZ	19205	7269149	CHASSIS ASSEMBLY . . . . .	1
				UOC:G79,023	
2	PAFZZ	19204	7269152	SPRING,HELICAL . . . . .	1
				UOC:G79,023	
3	XAFZZ	19204	7269150	PAWL . . . . .	1
				UOC:G79,023	
4	PAFZZ	19204	7269151	SHAFT,SHOULDERED . . . . .	1
				UOC:G79,023	

END OF FIGURE

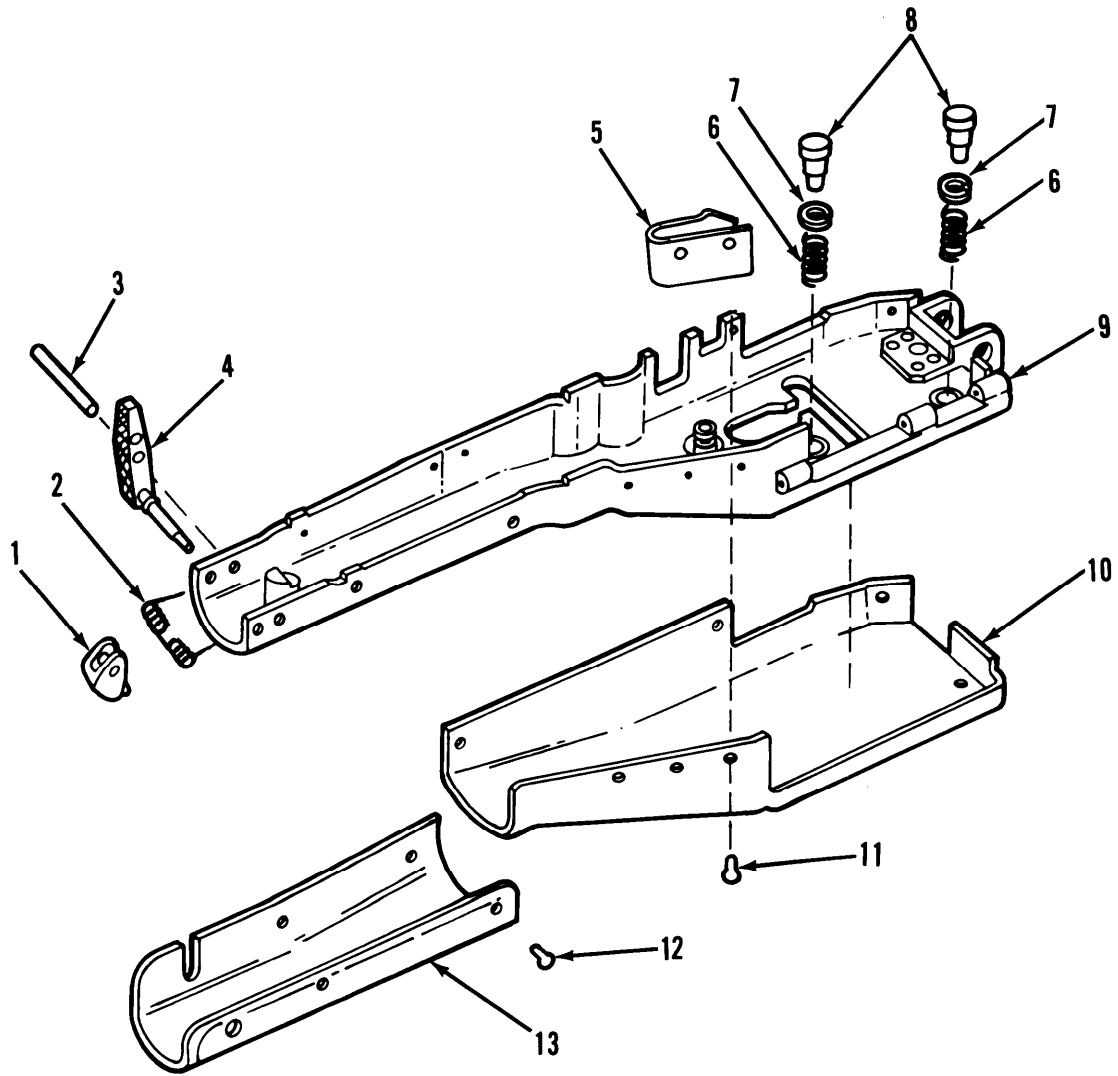


Figure 18. Cover housing assembly.

## SECTION II

TM9-1005-224-24P

(1) ITEM NO	(2) SMR CODE	(3) FSCM	(4) PART NUMBER	(5) DESCRIPTION AND USABLE ON CODE (UOC)	(6) QTY
GROUP 0804:COVER HOUSING ASSEMBLY 7269118					
FIG.18 COVER HOUSING ASSEMBLY					
1	PAFZZ	19204	7269136	LATCH,COVER UOC:G79,023	1
2	PAFZZ	19204	7791271	SPRING,HELICAL UOC:G79,023	1
3	PAHZZ	19205	7791270	PIN,STRAIGHT, HEADLESS UOC:G79,023	1
4	PAFZZ	19204	7269137	LEVER ASSEMBLY, LATCH UOC:G79,023	1
5	PAFZZ	19200	9362520	MOUNT,RESILIENT REPLACES P/N 7269126 UOC:G79,023	1
6	PAHZZ	19204	7269141	SPRING,HELICAL UOC:G79,023	2
7	PAHZZ	19204	7269144	WASHER,FLAT UOC:G79,023	2
8	PAHZZ	19205	7269143	PIN,SHOULDER,HEADED UOC:G79,023	2
9	XAHZZ	19204	7269128	FRAME ASSEMBLY, COVER UOC:G79,023	1
10	PAHZZ	19204	7269140	SHIELD,COVER UOC:G79,023	1
11	PAFZZ	19204	7269139	RIVET,SOLID UOC:G79,023	2
12	PAFZZ	19204	7269112	RIVET,SOLID UOC:G79,023	9
13	PAHZZ	19204	7269138	PAD ASSEMBLY,CHEEK UOC:G79,023	1

END OF FIGURE

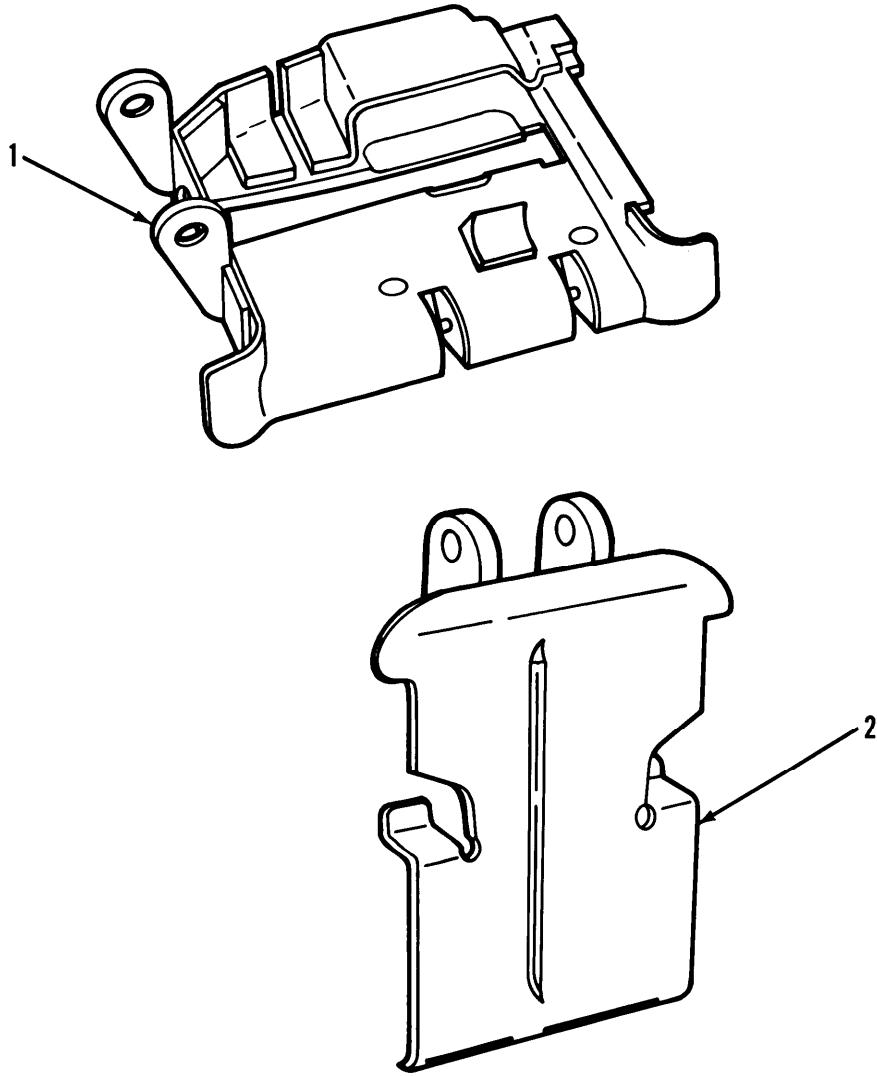


Figure 19. Tray and hanger assembly (M60 only).

(1) ITEM NO	(2) SMR CODE	(3) FSCM	(4) PART NUMBER	(5) DESCRIPTION AND USABLE ON CODES (UOC)	(6) QTY
GROUP 09:TRAY AND HANGER ASSEMBLY (M60 ONLY) 8448237					
FIG.19 TRAY AND HANGER ASSEMBLY					
1	PAOOO	19204	8448415	TRAY ASSEMBLY, CARTRIDGE FEED (SEE 1 FIG.20 FOR ASSEMBLY BREAKDOWN) . . . . .	
2	PAOZZ	19204	8448414	HANGER ASSEMBLY . . . . .	1
				UOC :023	
				UOC :023	

END OF FIGURE

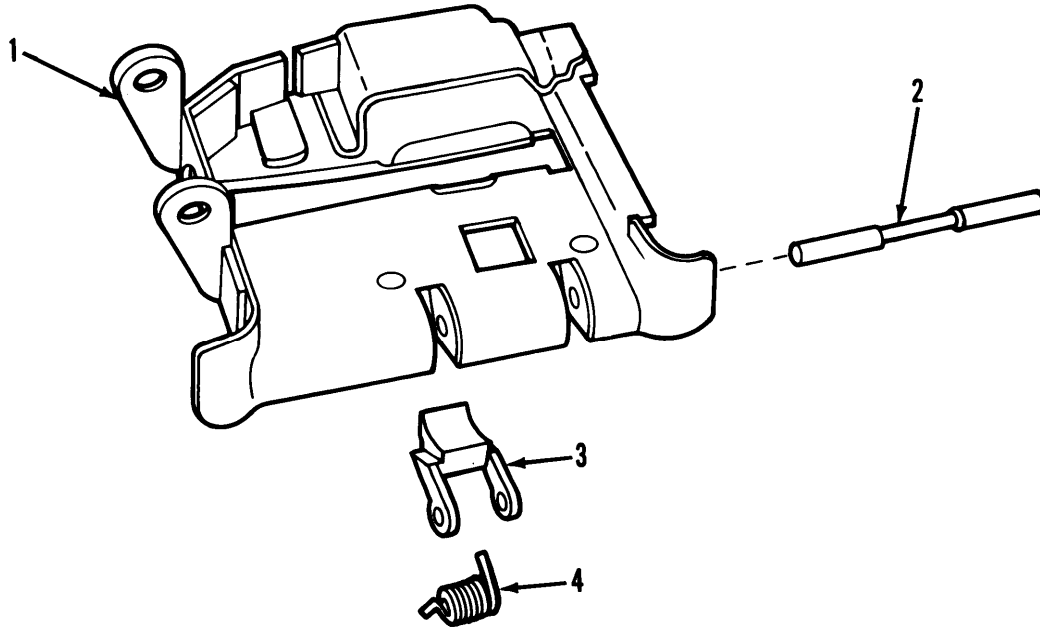


Figure 20. Cartridge feed tray assembly (M60 only).

(1) ITEM NO	(2) SMR CODE	(3) FSCM	(4) PART NUMBER	(5) DESCRIPTION AND USABLE ON CODES(UOC)	(6) QTY
GROUP 0901: CARTRIDGE FEED TRAY ASSY (M60 ONLY) 8448415					
FIG.20 M60 CARTRIDGE FEED TRAY ASSY					
1	XAOZZ	19204	7792097	FRAME ASSEMBLY, CARTRIDGE TRAY..... UOC:G79,023	1
2	PAOZZ	19204	7790724	SHALF,CARTRIDGE..... UOC:G79,023	1
3	PAOZZ	19204	7269332	PAWL CARTRIDGE RETAINER..... UOC:G79,023	1
4	PAOZZ	19204	7269335	SPRING,HELICAL..... UOC:G79,023	1

END OF FIGURE

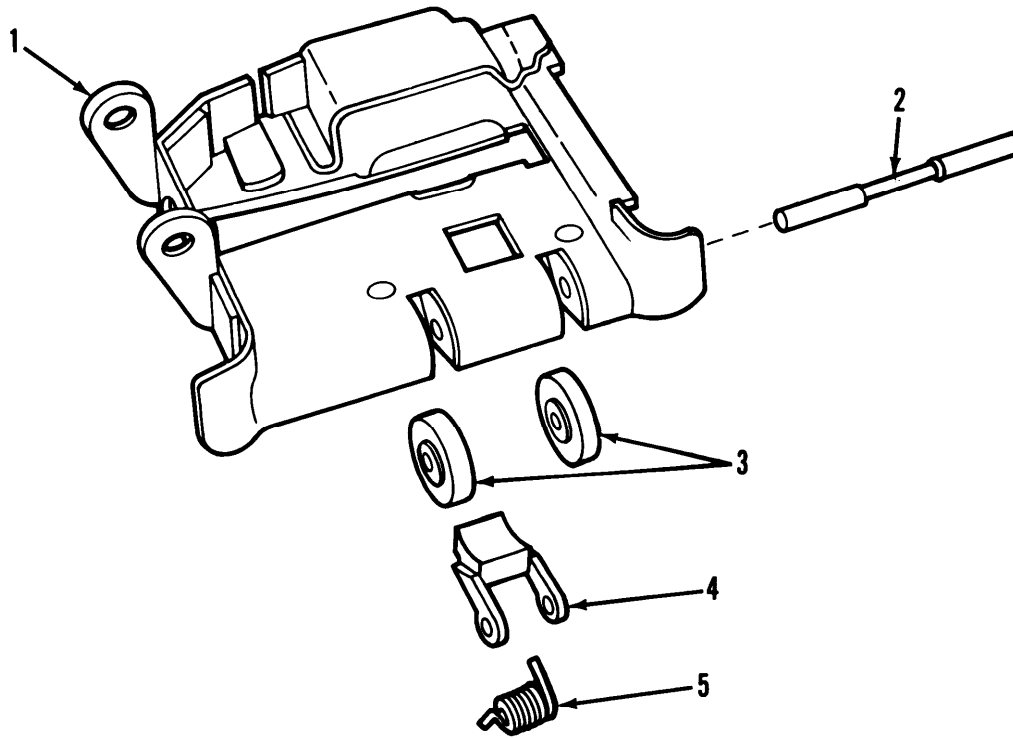


Figure 21. Cartridge feed tray assembly (M60D only).

(1)	(2)	(3)	(4)	(5)	(6)
ITEM NO	SMR CODE	FSCM	PART NUMBER	DESCRIPTION AND USABLE ON CODES (UOC)	QTY
GROUP 10: CARTRIDGE FEED TRAY ASSY (M60D ONLY) 7792096					
FIG.21 M60D CARTRIDGE FEED TRAY ASSY					
1	XAOZZ	19204	7792097	FRAME ASSEMBLY, CARTRIDGE TRAY . . . . . UOC:G79,023	1
2	PAOZZ	19204	7790724	SHAFT, CARTRIDGE . . . . . UOC:G79,023	1
3	PAOZZ	19204	7269333	ROLLER , LINEAR-ROTARY. . . . . UOC : G79	2
4	PAOZZ	19204	7269332	PAWL CARTRIDGE RETAINER . . . . . UOC:G79,023	1
5	PAOZZ	19204	7269335	SPRING, HELICAL . . . . . UOC:G79,023	1

END OF FIGURE

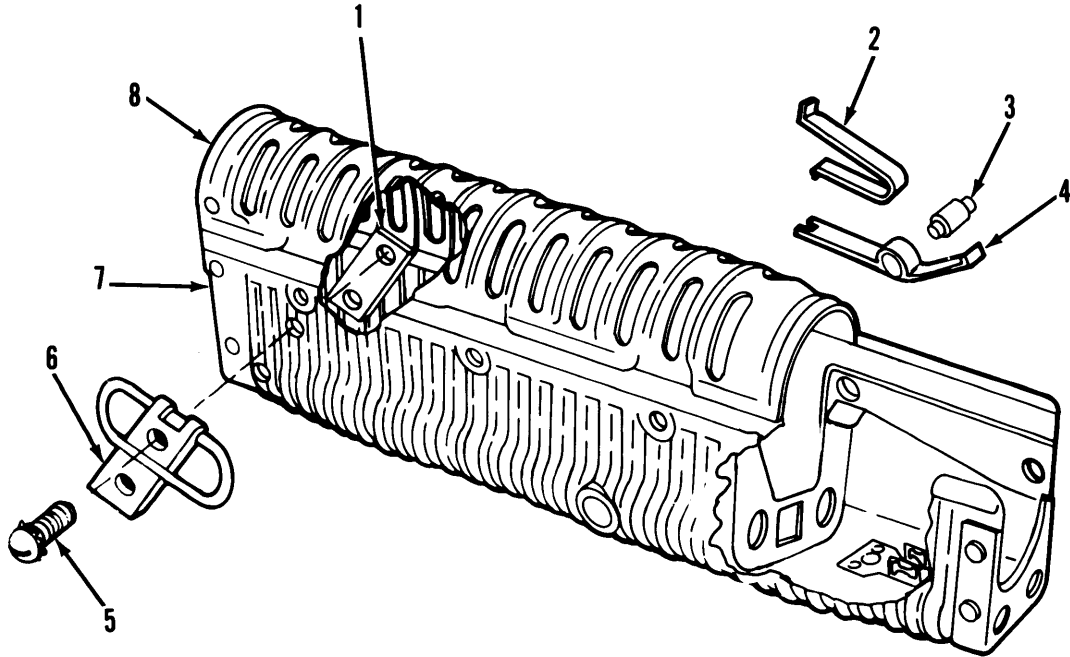


Figure 22. Forearm Assembly.

(1) ITEM NO	(2) SMR CODE	(3) FSCM	(4) PART NUMBER	(5) DESCRIPTION AND USABLE ON CODES(UOC)	(6) QTY
-------------------	--------------------	-------------	-----------------------	---	------------

GROUP 11:FORARM ASSEMBLY  
(M60 ONLY) 11010430

FIG.22 M60 FORARM ASSEMBLY

1	PAOZZ	19204	11010369	SPACER, PLATE . . . . .	1
				UOC :023	
2	PAOZZ	19204	7269187	SPRING, FLAT . . . . .	1
				UOC:023	
3	PAOZZ	19204	7269184	PIN, SHOULDER . . . . .	1
				UOC:023	
4	PAOZZ	19204	7269180	CATCH, FOREARM . . . . .	1
				UOC :023	
5	PAOZZ	19205	11010365	SCREW, ASSEMBLED . . . . .	2
				UOC:023	
6	PAOZZ	19204	7267089	SWIVEL, SLING, SMALL . . . . .	1
				UOC :023	
7	XAFFF	19204	7269190	SHELL ASSEMBLY FOREARM . . . . .	1
				UOC:023	
8	XAFZZ	19204	7269183	COVER ASSEMBLY FOREARM . . . . .	1
				UOC :023	

END OF FIGURE

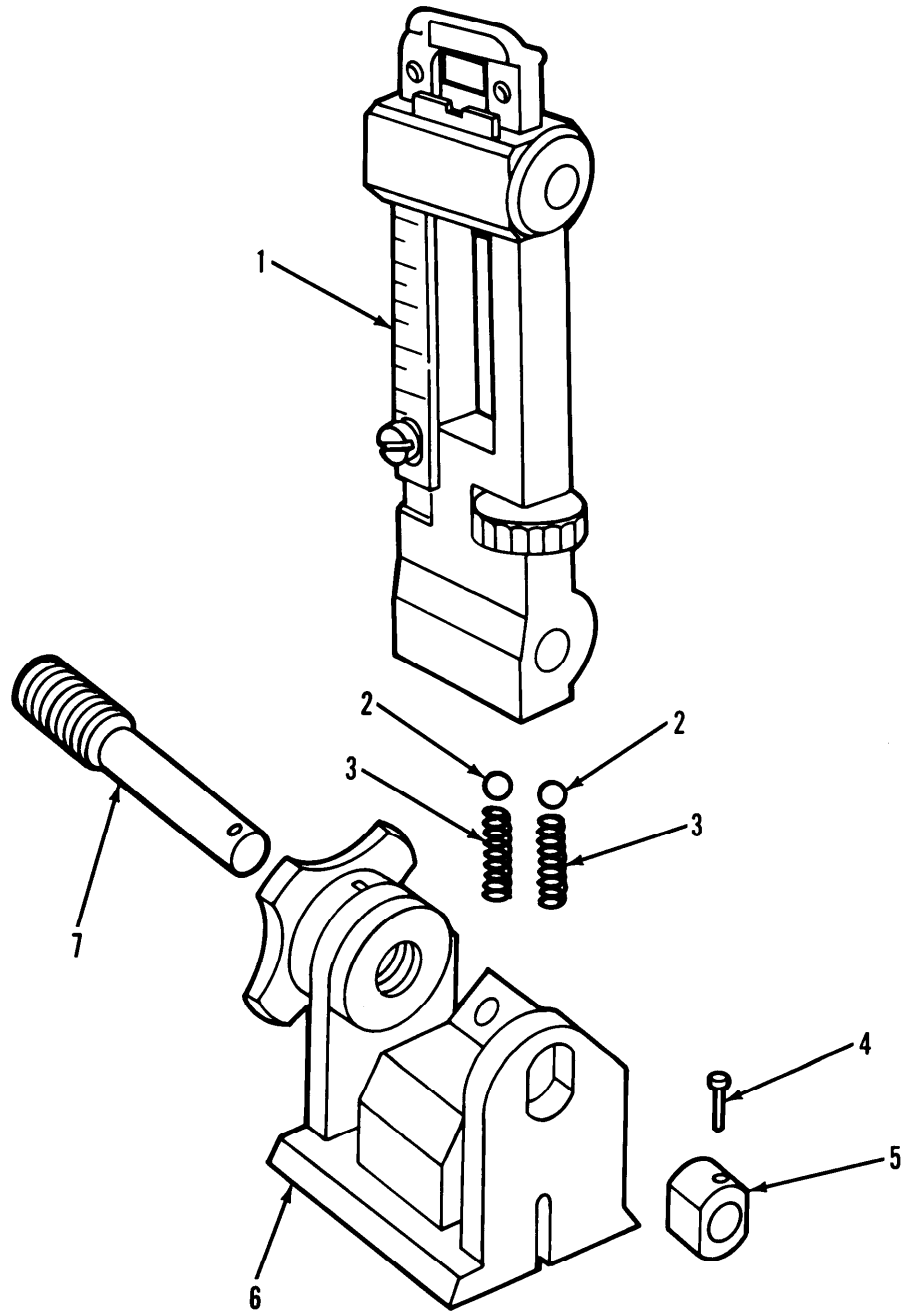


Figure 23. Rearsight (M60 only).



## SECTION II

TM9-1005-224-24P

(1) ITEM NO	(2) SMR CODE	(3) FSCM	(4) PART NUMBER	(5) DESCRIPTION AND USABLE ON CODE (UOC)	(6) QTY
				GROUP 12 REAR SIGHT (M60 ONLY) 7791437	
				FIG.23 M60 REAR SIGHT	
1	XAFFF	19204	7269279	LEAF ASSEMBLY, REAR SIGHT (SEE FIG.24 FOR ASSEMBLY BREAKDOWN) UOC:023	1
2	PAFZZ	96906	MS19061-20005	BALL,BEARING UOC:023	2
3	PAFZZ	19204	7269283	SPRING,HELICAL UOC:023	2
4	PAFZZ	19204	7269280	RIVET,TUBULAR UOC:023	1
5	XAFZZ	19204	7269282	SLIDE,LATERAL UOC:023	1
6	PAFZZ	19204	7269278	BASE ASSEMBLY,REAR UOC:023	1
7	PAFZZ	19204	7269281	PIN,SHOULDER UOC:023	1

END OF FIGURE

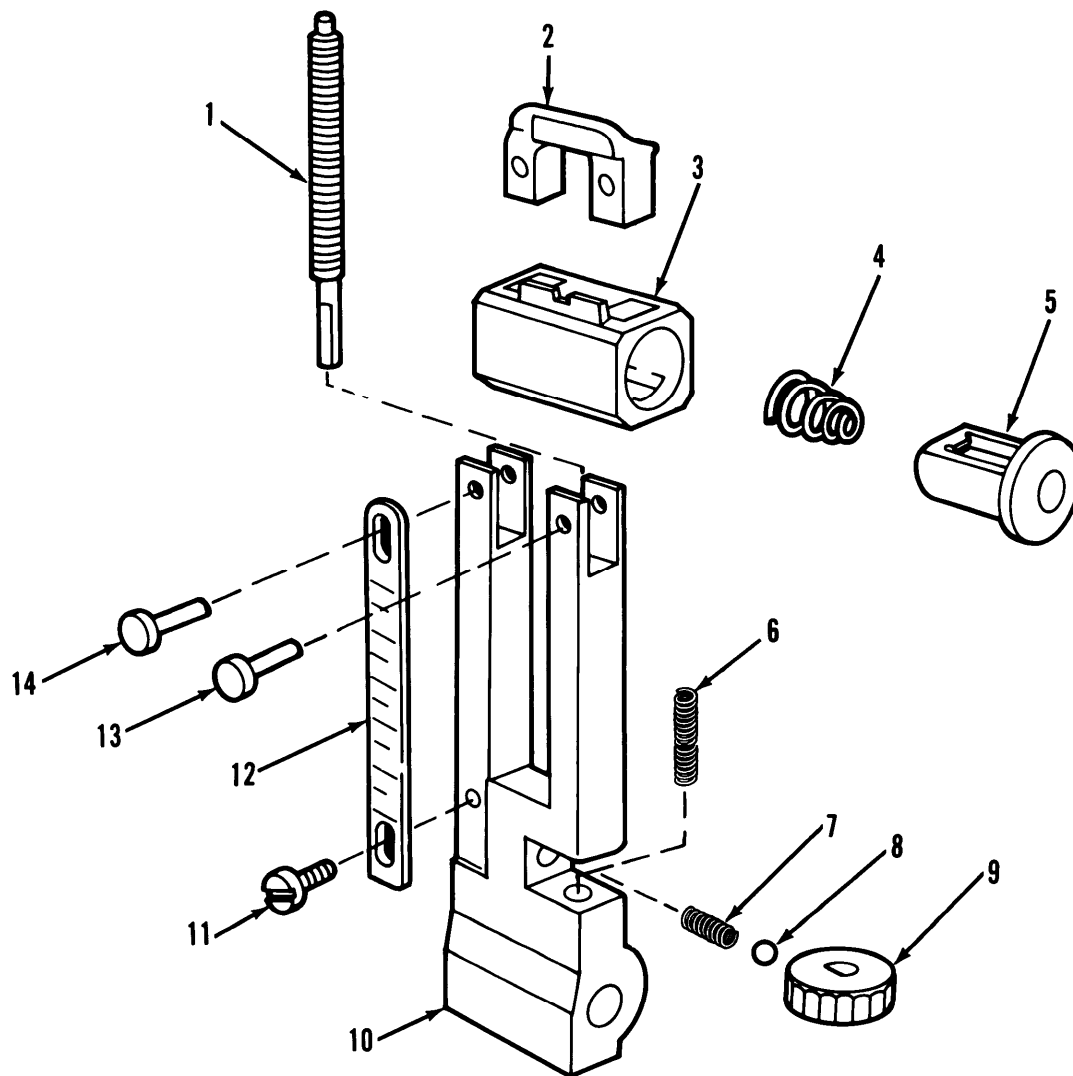


Figure 24. Rear sight leaf assembly (M60 only).

## SECTION II

TM9-1005-224-24P

(1) ITEM NO	(2) SMR CODE	(3) FSCM	(4) PART NUMBER	(5) DESCRIPTION AND USABLE ON CODE (UOC)	(6) QTY
GROUP 1201:REAR SIGHT LEAF ASSEMBLY (M60 ONLY) 7269279					
FIG.24 M60 REAR SIGHT LEAF ASSEMBLY					
1	XAFZZ	19204	7269295	SCREW,ELEVATION UOC:023	1
2	XAFZZ	19204	7269288	CAP, LEAF FRAME UOC:023	1
3	XAFZZ	19204	7269289	SLIDE UOC:023	1
4	PAFZZ	19205	7269299	SPRING,HELICAL UOC:023	1
5	XAFZZ	19204	7269292	RELEASE ASSEMBLY UOC:023	1
6	PAFZZ	19205	7269298	SPRING,HELICAL UOC:023	1
7	PAFZZ	19204	7269287	SPRING,HELICAL UOC:023	1
8	PAFZZ	96906	MS19061-3	BALL,BEARING UOC:023	1
9	XAFZZ	19204	7269291	KNOB,ELEVATING UOC:023	1
10	XAFZZ	19204	7269290	LEAF, REAR SIGHT UOC:023	1
11	PAFZZ	19204	7269296	SCREW,MACHINE UOC:023	1
12	PAFZZ	19204	11686738	SCALE,ELEVATION UOC:023	1
13	PAFZZ	19205	7269294	RIVET,SOLID CAP,RH UOC:023	1
14	PAFZZ	19205	7269293	RIVET,TUBULAR CAP,LH UOC:023	1

END OF FIGURE

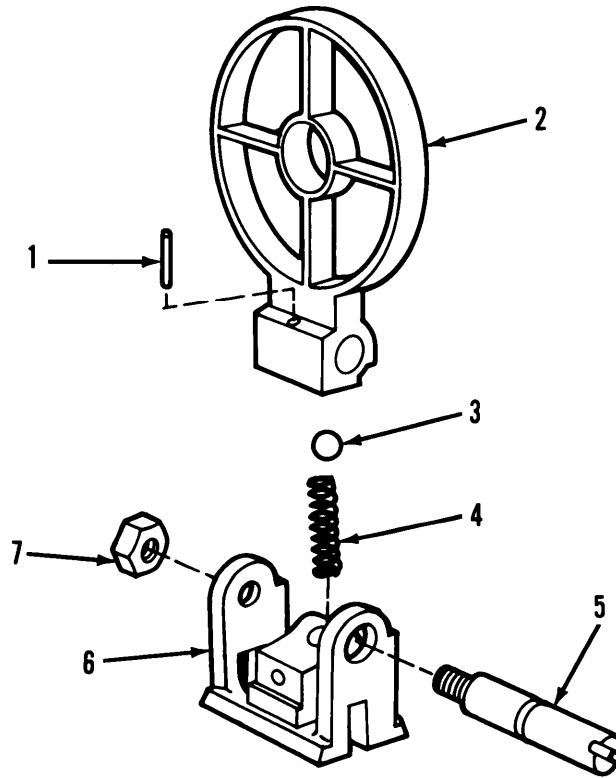


Figure 25. Rear sight (M60D only).

(1) ITEM NO	(2) SMR CODE	(3) FSCM	(4) PART NUMBER	(5) DESCRIPTION AND USABLE ON CODES(UOC)	(6) QTY
-------------------	--------------------	-------------	-----------------------	---	------------

GROUP 13:REAR SIGHT  
(M60D ONLY) 11699796

FIG.25 M60D REAR SIGHT

1	PAFZZ	96906	MS16562-119	PIN,SPRING . . . . .	1
				UOC:G79	
2	PAFZZ	19204	11699799	RING,SIGHT . . . . .	1
				UOC : G79	
3	PAFZZ	96906	MS19059-2412	BALL,BEARING . . . . .	1
				UOC : G79	
4	PAFZZ	96906	MS24585-75	SPRING,HELICAL . . . . .	1
				UOC:G79	
5	PAFZZ	19205	11699798	RETAINER,REAR SIGHT . . . . .	1
				UOC : G79	
6	PAFZZ	19205	11699797	BASE,REAR SIGHT . . . . .	1
				UOC:G79	
7	PAFZZ	19205	11699763	NUT,SELF-LOCKING . . . . .	1
				UOC : G79	

END OF FIGURE

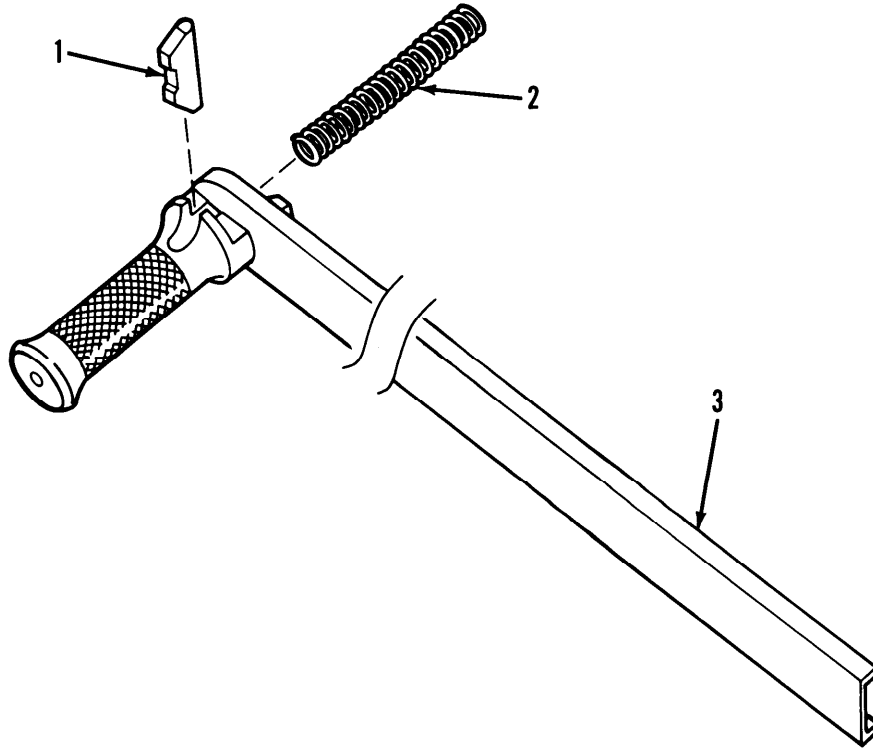


Figure 26. Cocking handle assembly.

(1) ITEM NO	(2) SMR CODE	(3) FSCM	(4) PART NUMBER	(5) DESCRIPTION AND USABLE ON CODES (UOC)	(6) QTY
GROUP 14:COCKING HANDLE ASSEMBLY 7791621					
FIG.26 COCKING HANDLE ASSEMBLY					
1	PAFZZ	19205	7269237	RETAINER,COCKING HANDLE . . . . .	1
				UOC:G79,023	
2	PAFZZ	19204	7791522	SPRING,HELICAL . . . . .	1
				UOC:G79,023	
3	PAFZZ	19204	7269239	SLIDE ASSY,COCKING . . . . .	1
				UOC:G79,023	

END OF FIGURE

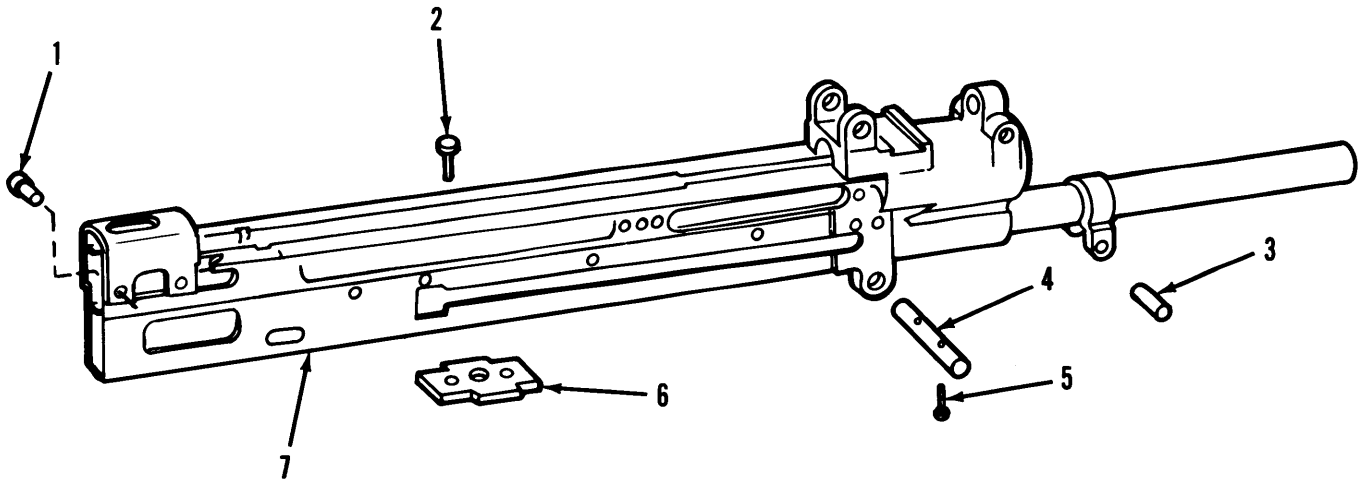


Figure 27. Gun receiver assembly (M60 only).

(1) ITEM NO	(2) SMR CODE	(3) FSCM	(4) PART NUMBER	(5) DESCRIPTION AND USABLE ON CODES (UOC)	(6) QTY
-------------------	--------------------	-------------	-----------------------	--	------------

GROUP 15:GUN RECEIVER ASSEMBLY  
(M60 ONLY) 11686308

FIG.27 M60 GUN RECEIVER ASSEMBLY

1	PAFZZ	19205	7269411	RIVET,SOLID . . . . .	4
				UOC:023	
2	PAFZZ	19204	7792972	RIVET,SOLID . . . . .	2
				UOC :023	
3	PAFZZ	19204	7792976	PIN,STRAIGHT MOUNTING,FRONT . . . . .	1
				UOC :023	
4	PAFZZ	19204	7792975	PIN,STRAIGHT . . . . .	1
				UOC :023	
5	PAFZZ	19204	7792971	PIN,STRAIGHT,HEADED . . . . .	2
				UOC :023	
6	PAFZZ	19204	7792974	PLATE,MOUNTING . . . . .	1
				UOC :023	
7	XADDA	19200	11686307	RECEIVER ASSEMBLY . . . . .	1
				UOC :023	

END OF FIGURE

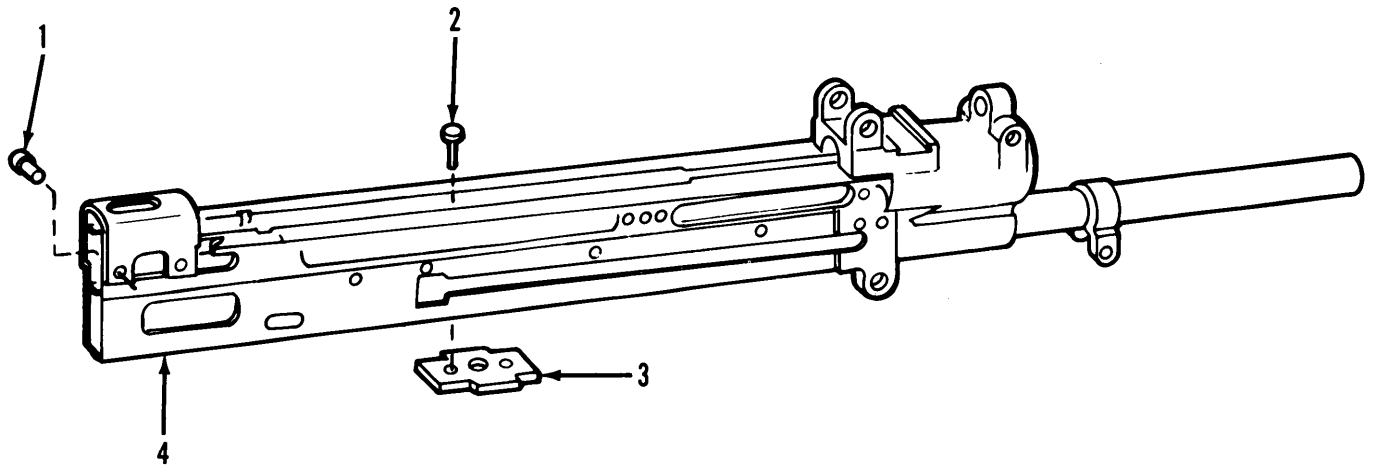
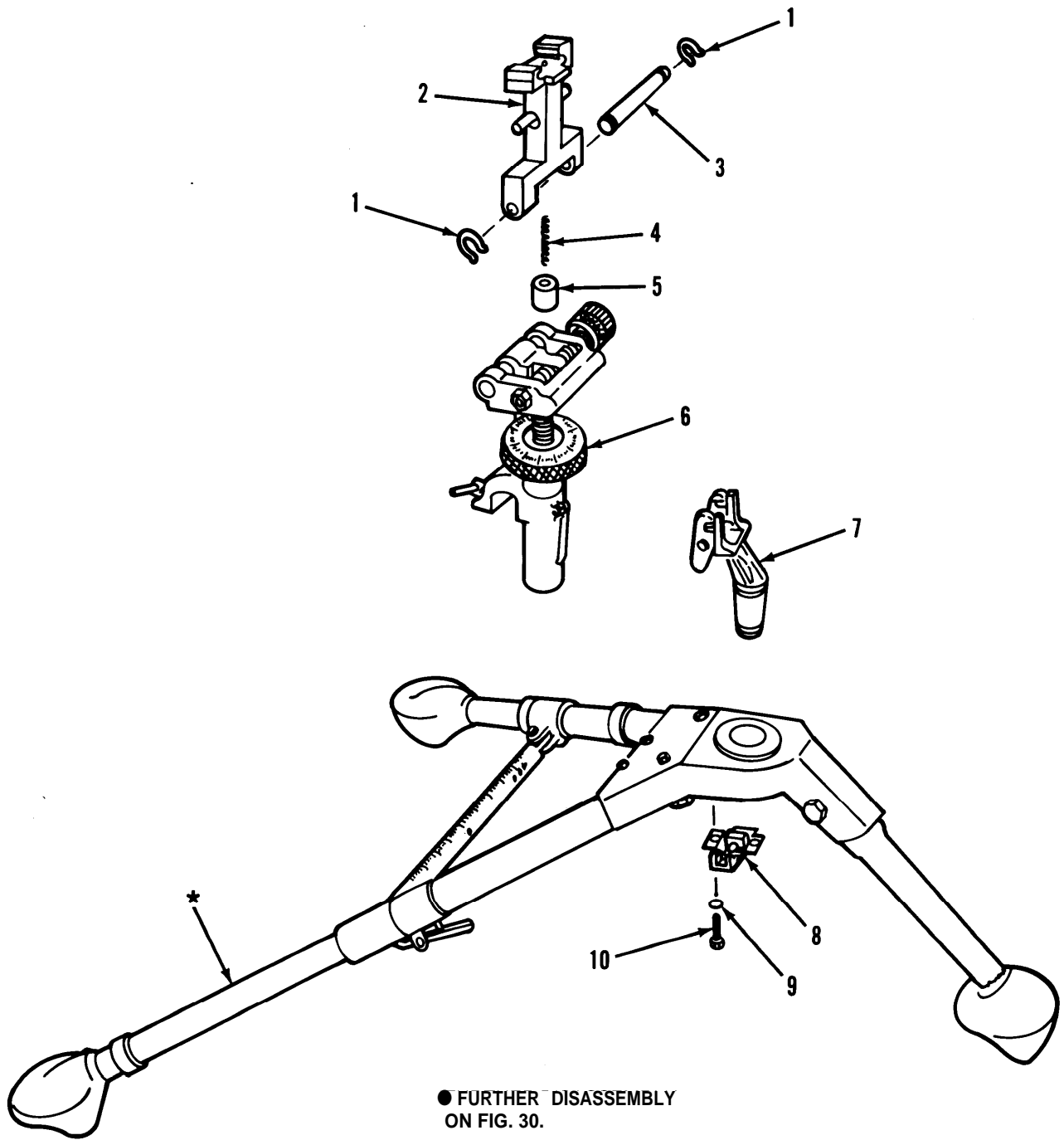


Figure 28. Gun receiver assembly (M60D only).

(1) ITEM NO	(2) SMR CODE	(3) FSCM	(4) PART NUMBER	(5) DESCRIPTION AND USABLE ON CODES(UOC)	(6) QTY
GROUP 16:GUN RECEIVER ASSEMBLY (M60D ONLY) 11699805					
FIG.28 M60D GUN RECEIVER ASSEMBLY					
1	PAFZZ	19205	7269411	RIVET,SOLID . . . . .	4
				UOC:G79	
2	PAFZZ	19204	7792972	RIVET,SOLID . . . . .	2
				UOC:G79	
3	PAFZZ	19204	7792974	PLATE,MOUNTING . . . . .	1
				UOC:G79,023	
4	XADDA	19200	11686307	RECEIVER ASSEMBLY . . . . .	1
				UOC:G79	

END OF FIGURE



● FURTHER DISASSEMBLY  
ON FIG. 30.

Figure 29. Tripod mount, M122 machine gun (major assemblies).



## SECTION II

TM9-1005-224-24P

(1) ITEM NO	(2) SMR CODE	(3) FSCM	(4) PART NUMBER	(5) DESCRIPTION AND USABLE ON CODE (UOC)	(6) QTY
				GROUP 17:TRIPOD MOUNT, MACH GUN M122 (MAJOR ASSEMBLIES) 7790723	
				FIG.29 M122 MACHINE GUN TRIPOD MOUNT (MAJOR ASSEMBLIES)	
1	PAFZZ	96906	MS16624-1043	RING,RETAINING UOC:110	2
2	PAFZZ	19205	7792991	ADAPTER ASSEMBLY UOC:110	1
3	PAFZZ	19205	7792993	PIN,GROOVED, HEADLESS UOC:110	1
4	PAFZZ	19205	7792987	SPRING,HELICAL UOC:110	1
5	PAFZZ	19205	7792986	PLUNGER,STUD UOC:110	1
6	PAFFF	19205	7791119	MECHANISM ASSEMBLY, TRAVERSING AND ELEVATING (SEE FIG.31&32 FOR ASSEMBLY BREAKDOWN) UOC:110	1
7	PAFFF	19205	11010408	PINTLE ASSEMBLY (SEE FIG.33 FOR ASSEMBLY BREAKDOWN) UOC:110	1
8	PAFFF	19204	6108986	LOCK ASSEMBLY, PINTLE (SEE FIG.35 FOR ASSEMBLY BREAKDOWN) UOC:110	1
9	PAFZZ	19205	11010529	WASHER,LOCK UOC:110	2
10	PAFZZ	19204	5141950	SCREW,MACHINE UOC:110	2
				END OF FIGURE	

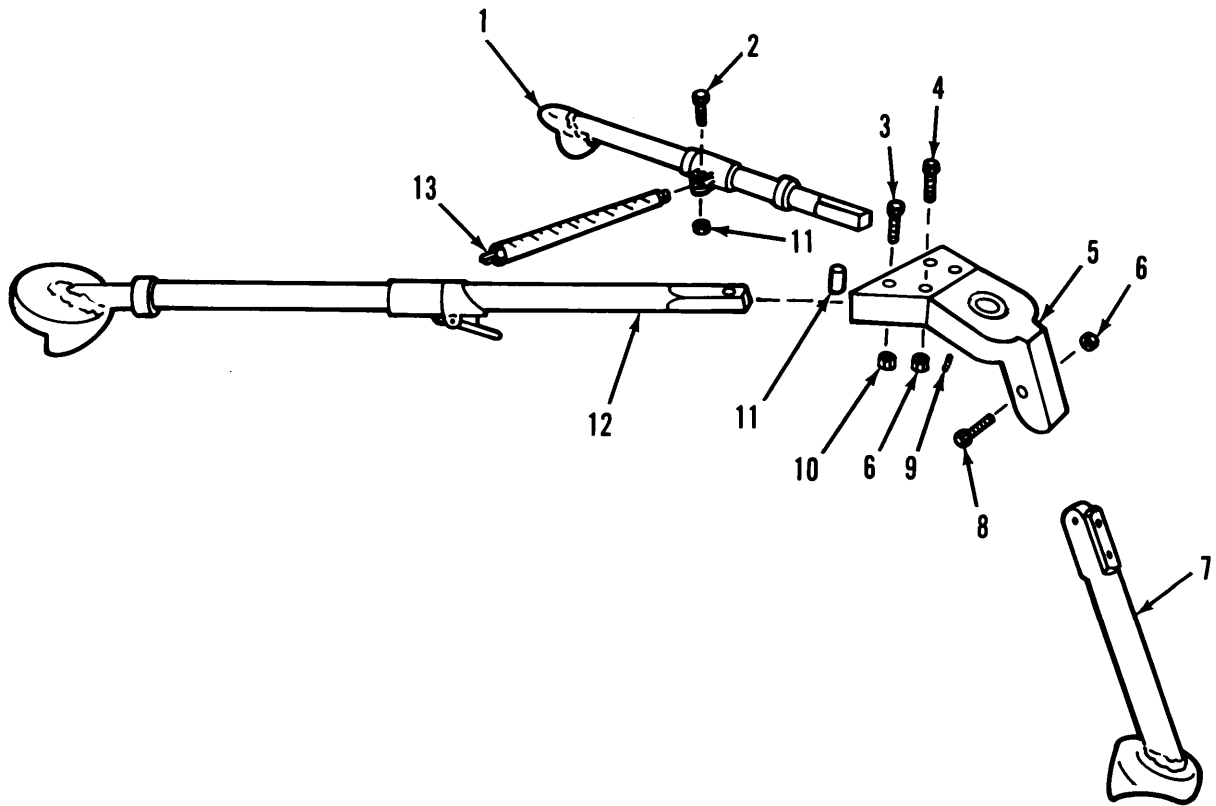


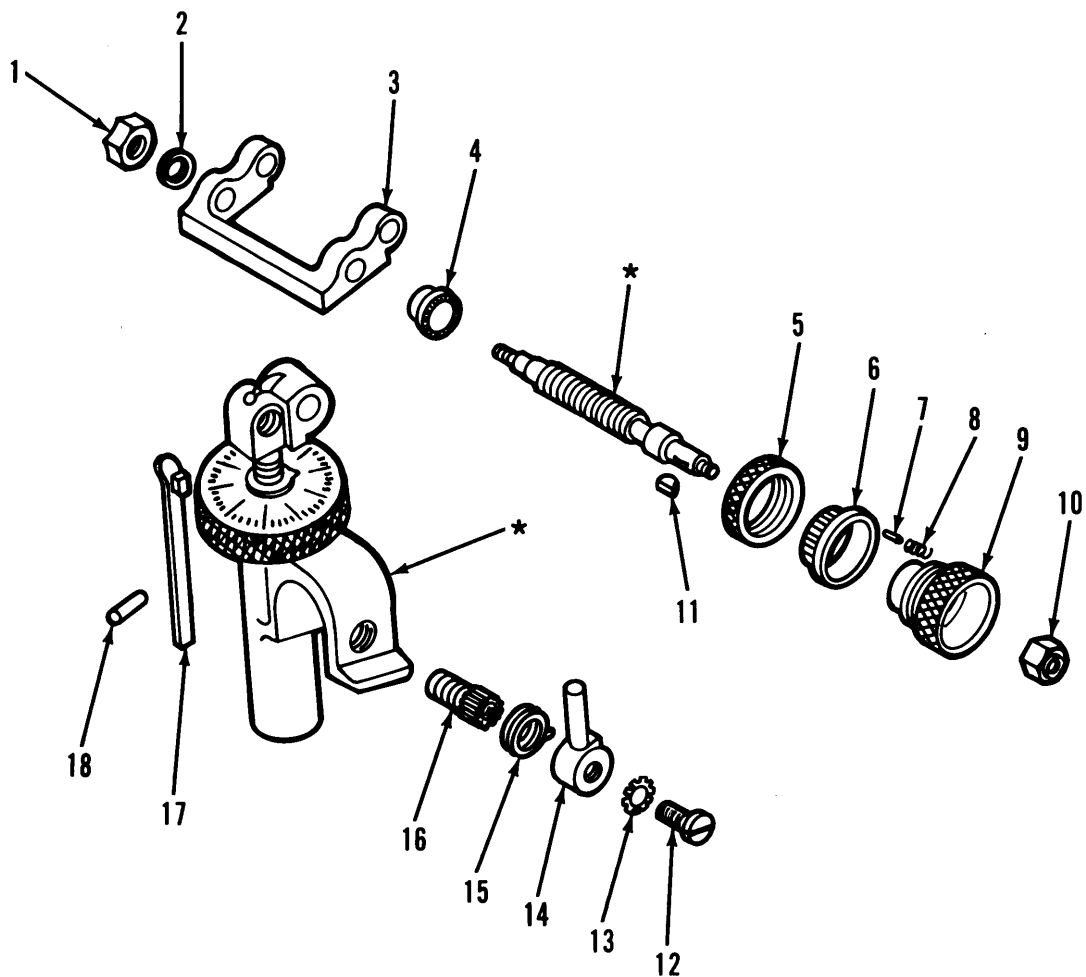
Figure 30. Tripod mount, M122 machine gun (major components).

## SECTION II

TM9-1005-224-24P

(1) ITEM NO	(2) SMR CODE	(3) FSCM	(4) PART NUMBER	(5) DESCRIPTION AND USABLE ON CODE (UOC)	(6) QTY
GROUP 17:TRIPOD MOUNT MACH GUN M122 (MAJOR COMPONENTS) 7790723					
FIG.30 M122 MACHINE GUN TRIPOD MOUNT (MAJOR COMPONENTS)					
1	PAFZZ	19204	5559338	LEG,TRIPOD MOUNT UOC:110	1
2	PAFZZ	19204	5169880	BOLT,MACHINE UOC:110	2
3	PAFZZ	19204	5169881	BOLT,MACHINE UOC:110	2
4	PAFZZ	19204	5169882	BOLT,MACHINE UOC:110	2
5	XADDD	19204	7790948	HEAD UOC:110	1
6	PAFZZ	96906	MS51968-8	NUT,PLAIN,HEXAGON UOC:110	3
7	PAFZZ	19204	6108195	LEG,TRIPOD MOUNT FRONT UOC:110	1
8	PAFZZ	19204	5169879	BOLT,MACHINE UOC:110	1
9	PAFZZ	96906	MS51031-48	SCREW,SET UOC:110	1
10	PAFZZ	96906	MS51968-2	NUT,PLAIN,HEXAGON UOC:110	4
11	PAFZZ	19205	5139962	SPACER,SLEEVE UOC:110	2
12	PAFFF	19204	5559337	LEG,TRIPOD MOUNT (SEE FIG.34 FOR ASSEMBLY BREAKDOWN) UOC:110	1
13	PAFZZ	19205	5559333	BAR ASSEMBLY, TRAVERSING UOC:110	1

END OF FIGURE



**\* MUST BE REMOVED  
HERE FOR DISASSEMBLY.**

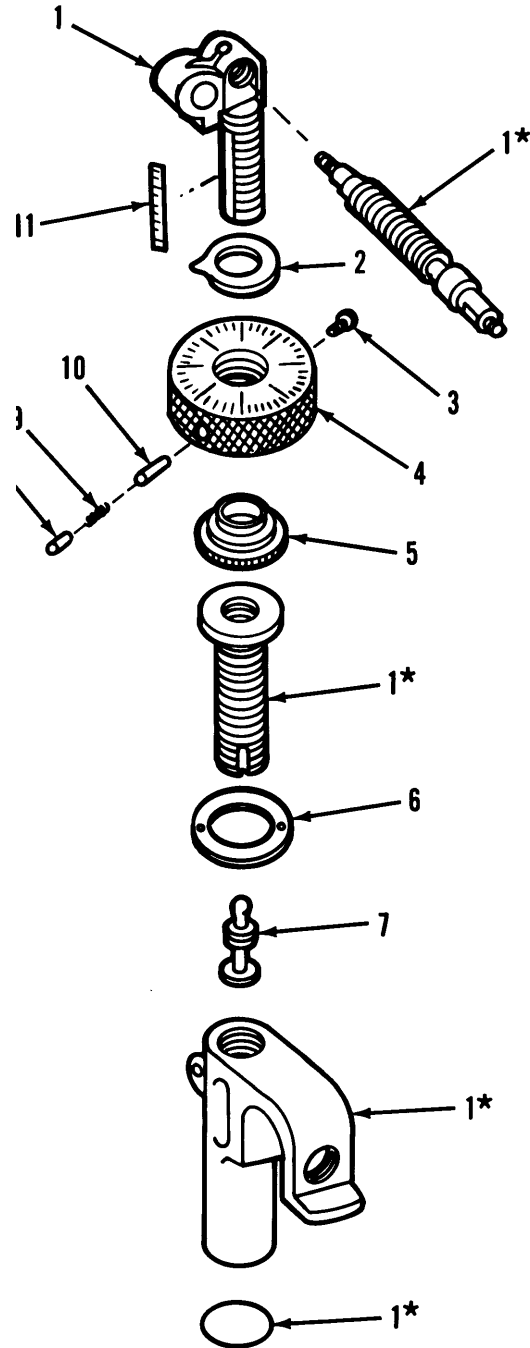
Figure 31. Traversing and elevating mechanism assembly (traversing and clamping unit).

## SECTION II

TM9-1005-224-24P

(1) ITEM NO	(2) SMR CODE	(3) FSCM	(4) PART NUMBER	(5) DESCRIPTION AND USABLE ON CODE (UOC)	(6) QTY
GROUP 1701: TRAVERSING AND ELEVATING MECHANISM ASSEMBLY (TRAVERSING AND CLAMPING UNIT) 7791119					
FIG.31 TRAVERSING AND CLAMPING UNIT					
1	PAFZZ	19205	11010206	NUT, SELF-LOCKING UOC:110	1
2	PAFZZ	19205	5174192	WASHER, FLAT UOC:110	1
3	XAFZZ	19204	11010037	YOKE, ELEVATING SCREW UPPER UOC:110	1
4	PAFZZ	19205	5174175	RING, TRAVERSING UOC:110	1
5	PAFZZ	19207	5171491	NUT, UNION UOC:110	1
6	PAFZZ	19205	5171492	DIAL, SCALE UOC:110	1
7	PAFZZ	19205	5171495	PIN, STRAIGHT, HEADLESS UOC:110	1
8	PAFZZ	19205	11010547	SPRING, HELICAL UOC:110	1
9	PAFZZ	19207	6158375	KNOB UOC:110	1
10	PAFZZ	96906	MS51943-4	NUT, SELF-LOCKING UOC:110	1
11	PAFZZ	96906	MS35756-2	KEY, WOODRUFF UOC:110	1
12	PAOZZ	19204	5139989	SCREW, MACHINE UOC:110	1
13	PAOZZ	19205	11010413	WASHER, LOCK UOC:110	1
14	PAOZZ	19205	7793002	LEVER, TRAVERSING UOC:110	1
15	PAOZZ	19205	7793003	SPRING, HELICAL UOC:110	1
16	PAOZZ	19205	5139988	SCREW, TRAVERSING UOC:110	1
17	PAFZZ	19205	5189757	STOP ASSEMBLY, ELEVA UOC:110	1
18	PAFZZ	96906	MS16562-120	PIN, SPRING UOC:110	1

END OF FIGURE



\*SUPPLIED WITH IDENTICALLY  
NUMBERED PART.

Figure 32. Traversing and elevating mechanism assembly (elevating unit).

## SECTION II

TM9-1005-224-24P

(1) ITEM NO	(2) SMR CODE	(3) FSCM	(4) PART NUMBER	(5) DESCRIPTION AND USABLE ON CODE (UOC)	(6) QTY
GROUP 1701: TRAVERSING AND ELEVATING MECHANISM ASSEMBLY (ELEVATING UNIT) 7791119					
FIG.32 ELEVATING UNIT					
1	XAFZZ	19204	7793004	ELEVATING SCREW UOC:110	1
2	PAFZZ	19204	5139982	POINTER, DIAL UOC:110	1
3	PAFZZ	19204	5140612	SETSCREW UOC:110	1
4	PAFZZ	19204	6108211	KNOB UOC:110	1
5	PAFZZ	19204	5139994	RING, CLICK, HANDWHEEL UOC:110	1
6	PAFZZ	19205	5140485	RING, EXTERNALLY UOC:110	1
7	PAFZZ	19204	8408768	STOP, UPPER ELEVATING UOC:110	1
8	PAFZZ	19204	5139995	DISK, SOLID, PLAIN UOC:110	1
9	PAFZZ	19205	11010547	SPRING, HELICAL UOC:110	1
10	PAFZZ	19205	11010522	PIN STRAIGHT, HEADLESS UOC:110	1
11	PAFZZ	19205	11010242	PLATE, SCALE UOC:110	1

END OF FIGURE

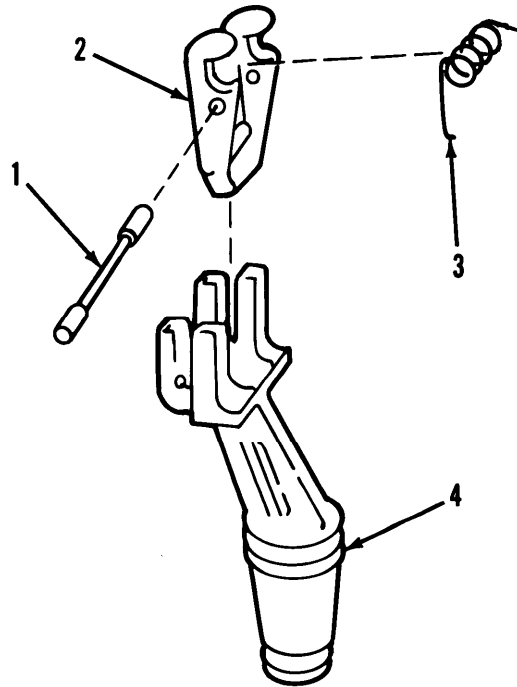


Figure 33. Pintle assembly.

(1) ITEM NO	(2) SMR CODE	(3) FSCM	(4) PART NUMBER	(5) DESCRIPTION AND USABLE ON CODES(UOC)	(6) QTY
-------------------	--------------------	-------------	-----------------------	---	------------

GROUP 1702:PINTLE ASSEMBLY  
11010408

FIG.33 PINTLE ASSEMBLY

1	PAFZZ	19205	11010411	PIN,GROOVED, HEADLESS . . . . .	1
				Uoc :110	
2	PAFZZ	19205	11010409	LATCH,PINTLE ASSEMBLY . . . . .	1
				Uoc :110	
3	PAFZZ	19204	11010410	SPRING,HELICAL TORSION . . . . .	1
				Uoc:110	
4	XAFZZ	19204	11010412	PINTLE ,. . . . .	1
				Uoc :110	

END OF FIGURE



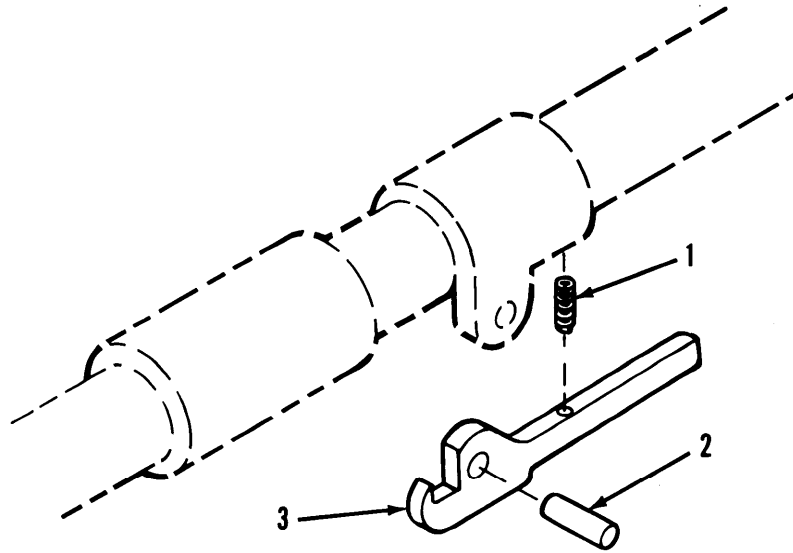


Figure 34. Tripod mount leg.

(1) ITEM NO	(2) SMR CODE	(3) FSCM	(4) PART NUMBER	(5) DESCRIPTION AND USABLE ON CODES(UOC)	(6) QTY
-------------------	--------------------	-------------	-----------------------	---	------------

GROUP 1703:TRIPOD MOUNT LEG  
5559337

FIG.34 TRIPOD MOUNT LEG

1	PAFZZ	19205	5139997	SPRING,HELICAL . . . . .	1
				UOC:110	
2	PAFZZ	19207	5140004	PIN,STRAIGHT . . . . .	1
				UOC:110	
3	PAFZZ	19205	5139959	LATCH . . . . .	1
				UOC :110	

END OF FIGURE

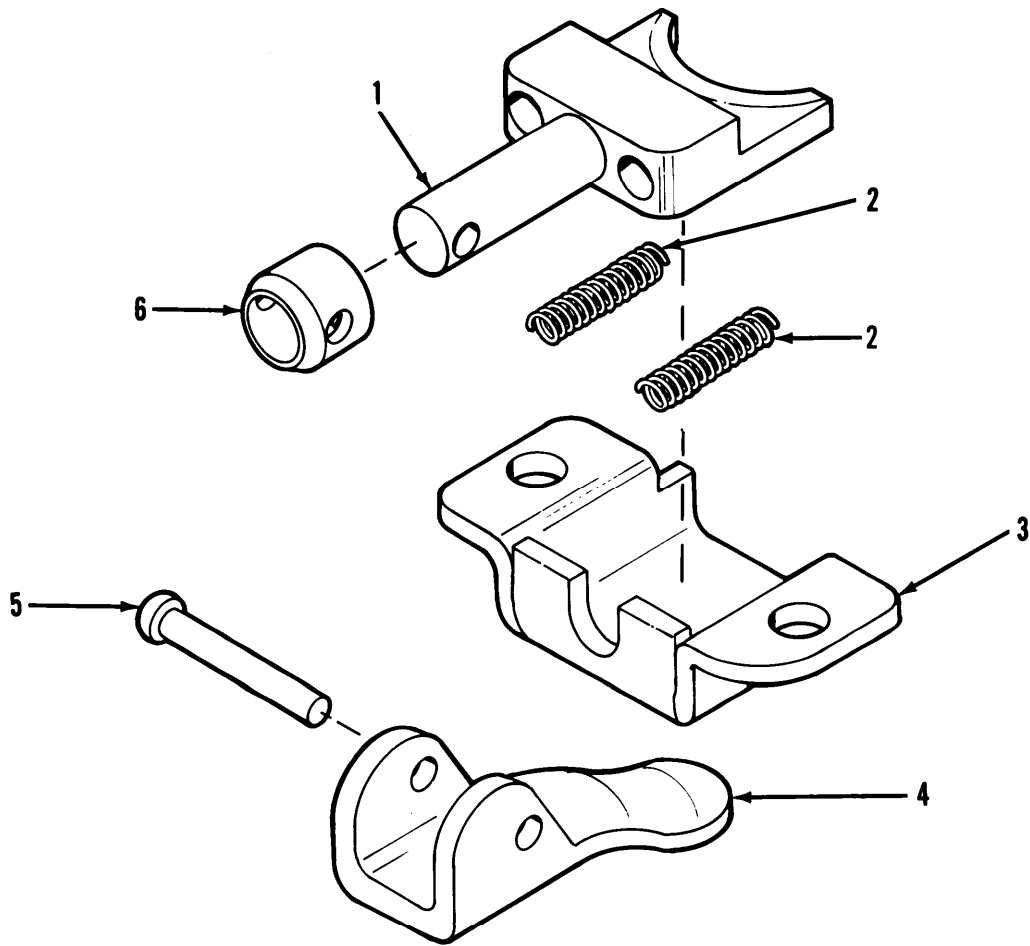


Figure 35. Pintle lock assembly.

(1) ITEM NO	(2) SMR CODE	(3) FSCM	(4) PART NUMBER	(5) DESCRIPTION AND USABLE ON CODES(UOC)	(6) QTY
-------------------	--------------------	-------------	-----------------------	---	------------

GROUP 1704:PINTLE LOCK ASSEMBLY  
6108986

FIG.35 PINTLE LOCK ASSEMBLY

1	XAFZZ	19204	5141121	BODY . . . . .	1
				UOC:110	
2	PAFZZ	19205	5142877	SPRING,HELICAL, . . . . .	2
				UOC:110	
3	XAFZZ	19205	6140648	HOUSING . . . . .	1
				UOC: 110	
4	PAFZZ	19205	5141080	CAM,PINTLE LOCK . . . . .	1
				UOC: 110	
5	PAFZZ	19205	11010448	RIVET,SOLID . . . . .	1
				UOC :110	
6	XAFZZ	19205	5141081	COLLAR, SHAFT . . . . .	1
				UOC :110	

END OF FIGURE



Section III. SPECIAL TOOL LIST

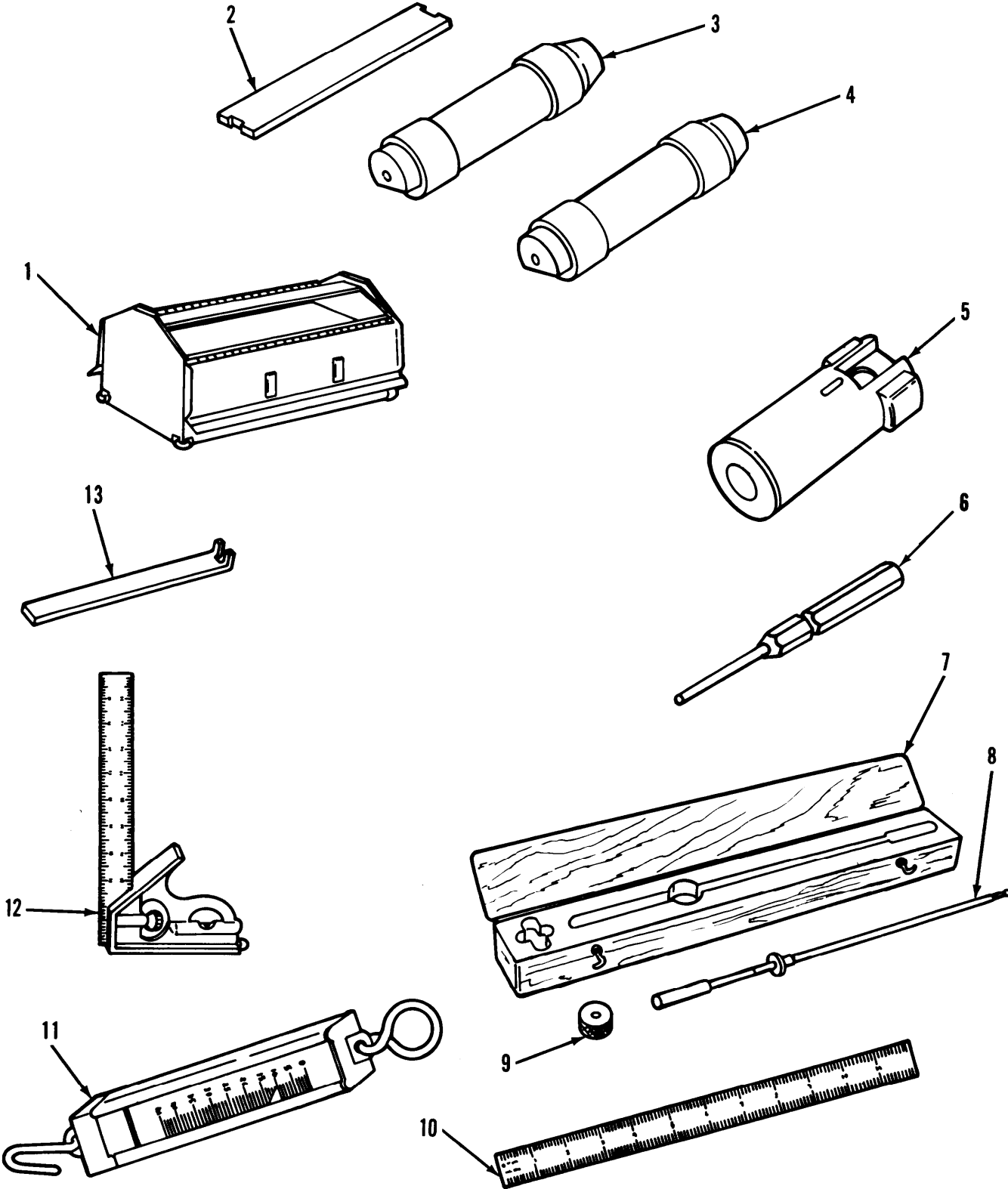


Figure 36. Special tools.

## SECTION III

TM9-1005-224-24P

(1) ITEM NO	(2) SMR CODE	(3) FSCM	(4) PART NUMBER	(5) DESCRIPTION AND USABLE ON CODE (UOC)	(6) QTY
GROUP 9500:SPECIAL TOOLS					
FIG.36 SPECIAL TOOLS					
1	PAFZZ	81348	GGGT558-2	TOOL BOX,PORTABLE BOI:2 PER UOC:G79,023	
2	PAFZZ	19205	7274754	GAGE,FIRING PIN PROTUSION 0.035 TO 0.043 BOI: 2 PER SUPPORTING DS/ GS MAINTENANCE COMPANY UOC:G79,023	
3	PAFZZ	19205	7274786	GAGE,HEADSPACE 1.6415 IN M60  PREEMBARKATION BOI: 2 PER SUPPORTING DS/GS MAINTENANCE COMPANY UOC:G79,023	
4	PAFZZ	19205	7274790	GAGE,HEADSPACE 1.6455 IN M60 SERIES FIELD REJECTION BOI: 2 PER SUPPORTIN G DS/GS MAINTENANCE COMPANY UOC:G79,023	
5	PAFZZ	19205	7799699	GAGE,TEST BOLT BOI:2 PER SUPPORTING DS/GS MAINTENANCE COMPANY UOC:G79,023	
6	PAFZZ	19205	7458598	GAGE,PLUG,PLAIN CYLINRICAL SGLE END NO GO 0.108 OD M60 SERIES BOI: 2 PER SUPPORTING DS/GS MAINTENANCE COMPANY UOC:G79,023	
7	PAFZZ	19205	7319995	CASE,CARRYING,GAGE, PART OF KIT P/N 5910297 UOC:G79,023	
8	PAFZZ	19205	7319994	GAGE BARREL EROSION CAL .30 M8 SERIES PART OF KIT P/N 5910297 UOC:G79,023	
9	PAFZZ	19205	7274724	GAGE WEAR CHECK PART OF KIT P/N 5910297 UOC:G79,023	
10	PAFZZ	81348	GGG-R-791	RULE,STEEL, BOI: 2 PER SUPPORTING DS/GS MAINTENANCE COMPANY UOC:G79,023	
11	PAFZZ	81348	AAA-S-133	SCALE, DIAL BOI: 2 PER SUPPORTING DS/GS MAINTENANCE COMPANY UOC:110	
12	PAFZZ	81348	GGG-S-656	SQUARE, COMBINATION BOI: 2 PER SUPPORTING DS/GS MAINTENANCE COMPANY	
13	PAFZZ	19204	8436748	STOP TOOL,SCREW BOI: 2 PER SUPPORTING DS/GS MAINTENANCE COMPANY	1
	ADFDD	19204	5910297	UOC:110 GAGE KIT,SMALL ARMS M8 SERIES,BOI: 1 PER SUPPORTING DS/GS COMPANY UOC:G79,023 CASE,CARRYING,GAGE,( 1) 36-7	

(1)	(2)	(3)	(4)	(5)	(6)
ITEM	SMR		PART		
NO	CODE	FSCM	NUMBER	DESCRIPTION AND USABLE ON CODE (UOC)	QTY

GAGE,BARREL EROSION( 1) 36-8  
GAGE,WEAR CHECK ( 1) 36-9

END OF FIGURE

SECTION II

TM9-1005-224-24P

(1) ITEM NO	(2) SMR CODE	(3) FSCM	(4) PART NUMBER	(5) DESCRIPTION AND USABLE ON CODE (UOC)	(6) QTY
				GROUP 9999:BULK MATERIAL	
				FIG. BULK	
1	PAOZZ	96906	MS20995C32	WIRE,NONELECTRICAL	1
				END OF FIGURE	





NATIONAL STOCK NUMBER AND PART NUMBER INDEX

NATIONAL STOCK NUMBER INDEX					
STOCK NUMBER	FIG.	ITEM	STOCK NUMBER	FIG.	ITEM
1005-00-013-7030	15	7	5315-00-514-0004	34	2
1005-00-020-8684	12	6	5365-00-514-0485	32	6
5315-00-051-8636	31	18	5305-00-514-0612	32	3
5305-00-054-6869	30	9	1005-00-514-1080	35	4
5315-00-058-6079	6	3	5305-00-514-1950	29	10
1005-00-064-5648	2	1	5360-00-514-2877	35	2
1005-00-066-2786	24	12	5306-00-516-9879	30	8
5360-00-066-6061	26	2	5306-00-516-9880	30	2
5315-00-066-6062	4	2	5306-00-516-9881	30	3
5315-00-067-3871	3	13	5306-00-516-9882	30	4
	4	8	4730-00-517-1491	31	5
	15	8	5355-00-517-1492	31	6
4933-00-069-8676	36	3	5315-00-517-1495	31	7
1005-00-069-9358	9	1	5310-00-517-4192	31	2
5320-00-071-8945	27	1	1005-00-518-9757	31	17
	28	1	1005-00-555-9333	30	13
5320-00-075-7225	4	7	1005-00-555-9337	30	12
4933-00-077-2081	36	13	1005-00-555-9338	30	1
5210-00-078-8949	36	12	1005-00-588-3490	31	4
5315-00-083-0289	27	5	1005-00-603-4834	29	6
5320-00-083-0290	27	2	1005-00-603-9285	2	11
	28	2	1005-00-608-5002	11	1
1005-00-083-0291	27	6	1005-00-608-5004	11	7
	28	3	5365-00-608-5005	11	2
5315-00-083-0292	27	4	1005-00-608-5008	11	8
5315-00-083-0293	27	3	5310-00-608-5009	11	3
3110-00-100-6149	25	3	1005-00-608-5020	12	7
5310-00-158-4447	25	7	1005-00-608-5021	12	8
5315-00-196-2753	13	2	5315-00-608-5022	12	2
	14	2	5315-00-608-5024	12	3
5210-00-234-5223	36	10	5305-00-608-5025	12	1
5315-00-239-8019	6	7	5360-00-608-5026	12	4
6670-00-254-4634	36	11	1005-00-608-5027	12	5
9505-00-293-4208	BULK	1	5320-00-608-5032	13	1
1005-00-312-7177	1	17		14	1
5140-00-313-9486	36	7	1005-00-608-5037	7	2
4933-00-317-2501	36	9	1005-00-608-5039	7	4
4933-00-317-2504	36	8	1005-00-608-5057	7	9
1005-00-403-9507	19	2	5360-00-608-5059	7	7
1005-00-403-9508	19	1	5360-00-608-5060	7	10
5360-00-473-5447	31	15	5360-00-608-5061	7	3
5140-00-473-6260	36	1	5320-00-608-5085	18	12
1005-00-513-9959	34	3	1005-00-608-5089	15	3
5365-00-513-9962	30	11	1005-00-608-5090	15	2
5355-00-513-9982	32	2	1005-00-608-5091	15	9
5305-00-513-9988	31	16	1005-00-608-5093	15	6
5305-00-513-9989	31	12	1005-00-608-5096	16	1
1005-00-513-9994	32	5	1005-00-608-5097	16	4
5340-00-513-9995	32	8	5360-00-608-5098	16	2
5360-00-513-9997	34	1	1005-00-608-5109	18	1

NATIONAL STOCK NUMBER AND PART NUMBER INDEX

NATIONAL STOCK NUMBER INDEX

STOCK NUMBER	FIG.	ITEM	STOCK NUMBER	FIG.	ITEM
1005-00-608-5110	18	4	1005-00-610-8986	29	8
1005-00-608-5111	18	13	5355-00-615-8375	31	9
5320-00-608-5112	18	11	5315-00-616-5517	31	11
1005-00-608-5113	18	10	4933-00-647-3698	36	4
5360-00-608-5114	18	6	4933-00-653-3373	36	2
5315-00-608-5116	18	8	4933-00-653-9550	36	5
1005-00-608-5118	16	6	5360-00-690-3502	4	9
1005-00-608-5119	16	5	1005-00-690-3504	4	3
1005-00-608-5124	17	4	1005-00-690-3505	4	1
5360-00-608-5125	17	2	1005-00-722-3850	31	14
1005-00-608-5153	22	4	5310-00-732-0559	30	6
5315-00-608-5157	22	3	5220-00-745-8598	36	6
5360-00-608-5160	22	2	5305-00-753-4113	2	10
1005-00-608-5176	9	10	5315-00-761-6881	3	5
5315-00-608-5177	9	9	5310-00-768-0319	30	10
5315-00-608-5178	1	2	1005-00-768-7084	20	2
	9	2		21	2
1005-00-608-5179	9	4	1005-00-772-0192	29	5
1005-00-608-5180	9	6	5360-00-772-0193	29	4
	10	6	1005-00-772-0194	29	2
1005-00-608-5182	9	5	1005-00-779-6030	7	11
	10	5	5365-00-803-7315	29	1
5360-00-608-5183	9	3	5315-00-809-5417	29	3
5360-00-608-5184	9	7	5315-00-812-3312	25	1
	10	7	5315-00-839-0901	2	3
1005-00-608-5185	9	8		7	6
1005-00-608-5203	2	7	1005-00-840-8768	32	7
1005-00-608-5208	26	1	5320-00-852-6313	5	4
1005-00-608-5210	26	3	5360-00-870-2118	18	2
1005-00-608-5214	1	4	1005-00-872-4441	7	12
1005-00-608-5218	1	6	1005-00-872-4442	7	8
1005-00-608-5221	2	6	1005-00-872-4443	7	5
5320-00-608-5248	23	4	1005-00-875-4350	11	4
5315-00-608-5249	23	7	5315-00-878-8615	18	3
5360-00-608-5251	23	3	1005-00-908-4141	1	16
5360-00-608-5255	24	7	1005-00-909-3003	3	11
5320-00-608-5261	24	14	5315-00-909-3004	10	3
5320-00-608-5262	24	13	3120-00-909-3005	10	4
5305-00-608-5264	24	11	5315-00-909-3006	3	15
5360-00-608-5266	24	6	5315-00-909-3007	6	8
5360-00-608-5267	24	4	1005-00-909-3008	10	8
5360-00-608-5269	1	5	1005-00-909-3009	10	2
5360-00-608-5270	2	5	1005-00-909-3011	3	6
1005-00-608-5299	20	3	5360-00-909-3012	6	6
	21	4	1005-00-909-3013	10	10
3120-00-608-5300	21	3	1005-00-909-3014	10	9
5360-00-608-5302	20	4	1005-00-909-3016	3	12
	21	5	5360-00-909-3017	10	1
1005-00-610-8195	30	7	1005-00-909-3018	25	2
5355-00-610-8211	32	4	1005-00-909-3020	1	1

NATIONAL STOCK NUMBER AND PART NUMBER INDEX

NATIONAL STOCK NUMBER INDEX			NATIONAL STOCK NUMBER INDEX		
STOCK NUMBER	FIG.	ITEM	STOCK NUMBER	FIG.	ITEM
5360-00-909-3021	3	7	5315-01-183-2860	8	4
1005-00-909-3022	25	6	1005-01-185-0734	8	1
1005-00-909-3023	3	9	1005-01-185-0735	7	1
1005-00-909-3024	3	14	1005-01-188-7877	1	15
5360-00-909-3025	6	5	5360-01-203-2973	1	12
5315-00-909-3026	6	4	1005-01-209-3590	11	5
5365-00-909-3033	6	9			
1005-00-909-4179	25	5			
5360-00-912-1146	15	5			
4010-00-912-3627	3	3			
1005-00-912-3628	6	2			
1005-00-912-3629	3	4			
5360-00-913-0928	2	4			
5340-00-913-5486	3	1			
5360-00-915-5615	31	8			
	32	9			
5315-00-915-8174	32	10			
5320-00-915-8185	35	5			
5310-00-916-2167	31	1			
5310-00-916-2171	29	9			
1005-00-918-2608	2	8			
1005-00-918-2609	2	2			
1005-00-919-7273	32	11			
5365-00-919-7274	5	3			
	22	1			
1005-00-919-7275	1	8			
1005-00-919-7278	5	1			
	22	6			
5305-00-920-7254	5	2			
	22	5			
1005-00-930-9932	1	18			
1005-00-934-8312	4	6			
5310-00-935-3750	31	10			
5315-00-940-9490	8	3			
1005-00-945-9756	29	7			
1005-00-945-9768	33	2			
5360-00-945-9954	33	3			
5315-00-947-7250	33	1			
5310-00-949-1971	31	13			
3110-00-950-4236	23	2			
3110-00-950-8446	24	8			
5360-00-952-4705	25	4			
5360-00-975-8595	1	13			
5310-00-981-8623	18	7			
5315-00-994-9648	7	13			
1005-00-999-6003	15	1			
5315-01-047-3003	11	9			
1005-01-158-4507	23	6			
1005-01-183-0572	1	11			
1005-01-183-0709	18	5			

## NATIONAL STOCK NUMBER AND PART NUMBER INDEX

FSCM	PART NUMBER	PART NUMBER INDEX STOCK NUMBER	FIG.	ITEM
81348	AAA-S-133	6670-00-254-4634	36	11
81348	GGG-R-791	5210-00-234-5223	36	10
81348	GGG-S-656	5210-00-078-8949	36	12
81348	GGGT558-2	5140-00-473-6260	36	1
96906	MS16562-119	5315-00-812-3312	25	1
96906	MS16562-120	5315-00-051-8636	31	18
96906	MS16562-127	5315-00-058-6079	6	3
96906	MS16562-151	5315-00-761-6881	3	5
96906	MS16624-1043	5365-00-803-7315	29	1
96906	MS17990C519	5340-00-913-5486	3	1
96906	MS19059-2412	3110-00-100-6149	25	3
96906	MS19061-20005	3110-00-950-4236	23	2
96906	MS19061-3	3110-00-950-8446	24	8
96906	MS20995C32	9505-00-293-4208	BULK	1
96906	MS24585-75	5360-00-952-4705	25	4
96906	MS24665-18	5315-00-067-3871	3	13
			4	8
			15	8
96906	MS24665-86	5315-00-239-8019	6	7
96906	MS35756-2	5315-00-616-5517	31	11
96906	MS39086-81	5315-00-839-0901	2	3
			7	6
96906	MS51031-48	5305-00-054-6869	30	9
96906	MS51838-88	5315-01-047-3003	11	9
96906	MS51923-105	5315-00-940-9490	8	3
96906	MS51943-4	5310-00-935-3750	31	10
96906	MS51968-2	5310-00-768-0319	30	10
96906	MS51968-8	5310-00-732-0559	30	6
19204	NPNLW		3	10
			11	6
19204	11010037		31	3
19204	11010152	1005-00-013-7030	15	7
19204	11010155	1005-00-603-9285	2	11
19204	11010184	1005-00-918-2608	2	8
19204	11010197	5360-00-913-0928	2	4
19205	11010206	5310-00-916-2167	31	1
19205	11010242	1005-00-919-7273	32	11
19200	11010357		1	10
19204	11010358	1005-00-872-4441	7	12
19205	11010365	5305-00-920-7254	5	2
			22	5
19204	11010369	5365-00-919-7274	5	3
			22	1
19204	11010375	1005-00-872-4442	7	8
19204	11010376	1005-00-872-4443	7	5
19205	11010377	1005-00-918-2609	2	2
19205	11010408	1005-00-945-9756	29	7
19205	11010409	1005-00-945-9768	33	2
19204	11010410	5360-00-945-9954	33	3
19205	11010411	5315-00-947-7250	33	1
19204	11010412		33	4

## NATIONAL STOCK NUMBER AND PART NUMBER INDEX

FSCM	PART NUMBER	PART NUMBER INDEX STOCK NUMBER	FIG.	ITEM
19205	11010413	5310-00-949-1971	31	13
19204	11010430	1005-00-919-7275	1	8
19205	11010448	5320-00-915-8185	35	5
19204	11010518	1005-00-908-4141	1	16
19205	11010522	5315-00-915-8174	32	10
19205	11010529	5310-00-916-2171	29	9
19205	11010547	5360-00-915-5615	31	8
			32	9
19200	11686307		27	7
			28	4
19204	11686308		2	12
19204	11686315	5360-00-912-1146	15	5
19204	11686711	1005-00-930-9932	1	18
19205	11686722	5320-00-852-6313	5	4
19204	11686738	1005-00-066-2786	24	12
19204	11686976	1005-00-934-8312	4	6
19200	11699751	1005-00-909-3024	3	14
19200	11699752		6	1
19204	11699756	5360-00-909-3012	6	6
19205	11699757	5315-00-909-3007	6	8
19205	11699763	5310-00-158-4447	25	7
19204	11699767	5360-00-909-3025	6	5
19205	11699768	5315-00-909-3026	6	4
19205	11699769	1005-00-912-3628	6	2
19205	11699772	5365-00-909-3033	6	9
19205	11699773		3	8
19205	11699774	1005-00-909-3013	10	10
19204	11699775	5360-00-909-3017	10	1
19205	11699776	1005-00-909-3009	10	2
19204	11699777	1005-00-909-3008	10	8
19204	11699778	3120-00-909-3005	10	4
19205	11699779	5315-00-909-3004	10	3
19205	11699780	1005-00-909-3014	10	9
19204	11699785	5360-00-909-3021	3	7
19204	11699786	1005-00-909-3020	1	1
19204	11699787	1005-00-909-3016	3	12
19205	11699788	5315-00-909-3006	3	15
19205	11699789	1005-00-909-3003	3	11
19200	11699790	1005-00-909-3023	3	9
19205	11699793	1005-00-909-3011	3	6
19205	11699796		4	4
19205	11699797	1005-00-909-3022	25	6
19205	11699798	1005-00-909-4179	25	5
19204	11699799	1005-00-909-3018	25	2
19205	11699805		4	5
19204	11699814	1005-00-999-6003	15	1
19204	11699817		16	3
19204	12002983	1005-00-312-7177	1	17
19205	5139959	1005-00-513-9959	34	3
19205	5139962	5365-00-513-9962	30	11
19204	5139982	5355-00-513-9982	32	2

## NATIONAL STOCK NUMBER AND PART NUMBER INDEX

FSCM	PART NUMBER	PART NUMBER INDEX STOCK NUMBER	FIG.	ITEM
19205	5139988	5305-00-513-9988	31	16
19204	5139989	5305-00-513-9989	31	12
19204	5139994	1005-00-513-9994	32	5
19204	5139995	5340-00-513-9995	32	8
19205	5139997	5360-00-513-9997	34	1
19207	5140004	5315-00-514-0004	34	2
19205	5140485	5365-00-514-0485	32	6
19204	5140612	5305-00-514-0612	32	3
19205	5141080	1005-00-514-1080	35	4
19205	5141081		35	6
19204	5141121		35	1
19204	5141950	5305-00-514-1950	29	10
19205	5142877	5360-00-514-2877	35	2
19204	5169879	5306-00-516-9879	30	8
19204	5169880	5306-00-516-9880	30	2
19204	5169881	5306-00-516-9882	30	3
19204	5169882	5306-00-516-9882	30	4
19207	5171491	4730-00-517-1491	31	5
19205	5171492	5355-00-517-1492	31	6
19205	5171495	5315-00-517-1495	31	7
19205	5174175	1005-00-588-3490	31	4
19205	5174192	5310-00-517-4192	31	2
19205	5189757	1005-00-518-9757	31	17
19205	5559333	1005-00-555-9333	30	13
19204	5559337	1005-00-555-9337	30	12
19204	5559338	1005-00-555-9338	30	1
19204	5910297		36	
19204	6108195	1005-00-610-8195	30	7
19204	6108211	5355-00-610-8211	32	4
19204	6108986	1005-00-610-8986	29	8
19205	6140648		35	3
19207	6158375	5355-00-615-8375	31	9
19204	7267089	1005-00-919-7278	5	1
			22	6
19204	7269027		1	9
19204	7269028	1005-00-608-5002	11	1
19204	7269030	1005-00-608-5004	11	7
19204	7269031	5365-00-608-5005	11	2
19204	7269034	1005-00-608-5008	11	8
19204	7269035	5310-00-608-5009	11	3
19204	7269046	1005-00-608-5020	12	7
19204	7269047	1005-00-608-5021	12	8
19204	7269048	5315-00-608-5022	12	2
19204	7269050	5315-00-608-5024	12	3
19204	7269051	5305-00-608-5025	12	1
19204	7269052	5360-00-608-5026	12	4
19204	7269053	1005-00-608-5027	12	5
19204	7269057	5315-00-196-2753	13	2
			14	2
19204	7269058	5320-00-608-5032	13	1
			14	1

## NATIONAL STOCK NUMBER AND PART NUMBER INDEX

FSCM	PART NUMBER	PART NUMBER INDEX STOCK NUMBER	FIG.	ITEM
19204	7269063	1005-00-608-5037	7	2
19204	7269065	1005-00-608-5039	7	4
19204	7269083	1005-00-608-5057	7	9
19204	7269085	5360-00-608-5059	7	7
19204	7269086	5360-00-608-5060	7	10
19204	7269087	5360-00-608-5061	7	3
19204	7269112	5320-00-608-5085	18	12
19204	7269114		1	3
19204	7269116	1005-00-608-5089	15	3
19204	7269117	1005-00-608-5090	15	2
19204	7269118	1005-00-608-5091	15	9
19204	7269119		15	4
19204	7269120	1005-00-608-5093	15	6
19204	7269123	1005-00-608-5096	16	1
19204	7269124	1005-00-608-5097	16	4
19204	7269125	5360-00-608-5098	16	2
19204	7269128		18	9
19204	7269136	1005-00-608-5109	18	1
19204	7269137	1005-00-608-5110	18	4
19204	7269138	1005-00-608-5111	18	13
19204	7269139	5320-00-608-5112	18	11
19204	7269140	1005-00-608-5113	18	10
19204	7269141	5360-00-608-5114	18	6
19205	7269143	5315-00-608-5116	18	8
19204	7269144	5310-00-981-8623	18	7
19204	7269145	1005-00-608-5118	16	6
19204	7269146	1005-00-608-5119	16	5
19205	7269149		17	1
19204	7269150		17	3
19204	7269151	1005-00-608-5124	17	4
19204	7269152	5360-00-608-5125	17	2
19204	7269180	1005-00-608-5153	22	4
19204	7269183		22	8
19204	7269184	5315-00-608-5157	22	3
19204	7269187	5360-00-608-5160	22	2
19204	7269190		22	7
19204	7269202		1	14
19204	7269203	1005-00-608-5176	9	10
19205	7269204	5315-00-608-5177	9	9
19204	7269205	5315-00-608-5178	1	2
			9	2
19204	7269206	1005-00-608-5179	9	4
19204	7269207	1005-00-608-5180	9	6
			10	6
19204	7269209	1005-00-608-5182	9	5
			10	5
19204	7269210	5360-00-608-5183	9	3
19204	7269211	5360-00-608-5184	9	7
			10	7
19204	7269212	1005-00-608-5185	9	8
19205	7269231	1005-00-608-5203	2	7

## NATIONAL STOCK NUMBER AND PART NUMBER INDEX

FSCM	PART NUMBER	PART NUMBER INDEX STOCK NUMBER	FIG.	ITEM
19205	7269237	1005-00-608-5208	26	1
19204	7269239	1005-00-608-5210	26	3
19204	7269243	1005-00-608-5214	1	4
19204	7269247	1005-00-608-5218	1	6
19204	7269250	1005-00-608-5221	2	6
19204	7269278	1005-01-158-4507	23	6
19204	7269279		23	1
19204	7269280	5320-00-608-5248	23	4
19204	7269281	5315-00-608-5249	23	7
19204	7269282		23	5
19204	7269283	5360-00-608-5251	23	3
19204	7269287	5360-00-608-5255	24	7
19204	7269288		24	2
19204	7269289		24	3
19204	7269290		24	10
19204	7269291		24	9
19204	7269292		24	5
19205	7269293	5320-00-608-5261	24	14
19205	7269294	5320-00-608-5262	24	13
19204	7269295		24	1
19204	7269296	5305-00-608-5264	24	11
19205	7269298	5360-00-608-5266	24	6
19205	7269299	5360-00-608-5267	24	4
19205	7269301	5360-00-608-5269	1	5
19205	7269302	5360-00-608-5270	2	5
19204	7269332	1005-00-608-5299	20	3
			21	4
19204	7269333	3120-00-608-5300	21	3
19204	7269335	5360-00-608-5302	20	4
			21	5
19205	7269411	5320-00-071-8945	27	1
			28	1
19204	7269415	1005-0-069-9358	9	1
19205	7274724	4933-00-317-2501	36	9
19205	7274754	4933-00-653-3373	36	2
19205	7274786	4933-00-069-8676	36	3
19205	7274790	4933-00-647-3698	36	4
19205	7319994	4933-00-317-2504	36	8
19205	7319995	5140-00-313-9486	36	7
19205	7458598	5220-00-745-8598	36	6
19204	7790551	5360-00-690-3502	4	9
19204	7790553	1005-00-690-3504	4	3
19204	7790554	1005-00-690-3505	4	1
19204	7790559	5305-00-753-4113	2	10
19204	7790724	1005-00-768-7084	20	2
			21	2
19204	7790907	1005-00-779-6030	7	11
19204	7790948		30	5
19205	7791119	1005-00-603-4834	29	6
19204	7791247	1005-00-875-4350	11	4
19205	7791270	5315-00-878-8615	18	3



## NATIONAL STOCK NUMBER AND PART NUMBER INDEX

FSCM	PART NUMBER	PART NUMBER INDEX STOCK NUMBER	FIG.	ITEM
19204	7791271	5360-00-870-2118	18	2
19204	7791437	1005-00-064-5648	2	1
19204	7791522	5360-00-066-6061	26	2
19205	7791621		2	9
19204	7792069	5315-00-066-6062	4	2
19204	7792086	5320-00-075-7225	4	7
19205	7792096		3	2
19204	7792097		20	1
			21	1
19204	7792398	5360-00-975-8595	1	13
19204	7792920	5315-00-994-9648	7	13
19204	7792971	5315-00-083-0289	27	5
19204	7792972	5320-00-083-0290	27	2
			28	2
19204	7792974	1005-00-083-0291	27	6
			28	3
19204	7792975	5315-00-083-0292	27	4
19204	7792976	5315-00-083-0293	27	3
19205	7792986	1005-00-772-0192	29	5
19205	7792987	5360-00-772-0193	29	4
19205	7792991	1005-00-772-0194	29	2
19205	7792993	5315-00-809-5417	29	3
19205	7793002	1005-00-722-3850	31	14
19205	7793003	5360-00-473-5447	31	15
19204	7793004		32	1
19204	7793009		11	10
19204	7793010	1005-00-020-8684	12	6
19205	7799699	4933-00-653-9550	36	5
19204	8408768	1005-00-840-8768	32	7
19205	8427869-7	4010-00-912-3627	3	3
19204	8427871	1005-00-912-3629	3	4
19204	8436748	4933-00-077-2081	36	13
19204	8448237		1	7
19204	8448414	1005-00-403-9507	19	2
19204	8448415	1005-00-403-9508	19	1
19200	9362505	1005-01-185-0735	7	1
19200	9362506	1005-01-185-0734	8	1
19200	9362507	5315-01-183-2860	8	4
19200	9362509		8	2
19200	9362510	1005-01-183-0572	1	11
19200	9362511	5360-01-203-2973	1	12
19200	9362512	1005-01-188-7877	1	15
19200	9362515	1005-01-209-3590	11	5
19200	9362520	1005-01-183-0709	18	5



RECOMMENDED CHANGES TO EQUIPMENT TECHNICAL PUBLICATIONS



THEN...JOT DOWN THE DOPE ABOUT IT ON THIS FORM, CAREFULLY TEAR IT OUT, FOLD IT AND DROP IT IN THE MAIL!

SOMETHING WRONG WITH THIS PUBLICATION?

FROM: (PRINT YOUR UNIT'S COMPLETE ADDRESS)

Your mailing address

---

DATE SENT

PUBLICATION NUMBER TM 9-1005-224-24P	PUBLICATION DATE Date of TM	PUBLICATION TITLE Machine Gun, 7.62-mm M60 W/E; Mount, Tripod, M122 and Machine Gun, 7.62-mm M60D W/E
---	--------------------------------	--

BE EXACT...PIN-POINT WHERE IT IS

PAGE NO.	PARA-GRAPH	FIGURE NO.	TABLE NO.
1-1		1	

IN THIS SPACE TELL WHAT IS WRONG AND WHAT SHOULD BE DONE ABOUT IT:

*Recommend item number 18 be SMR Coded PAOFF. Reason: No tools are required. Crew removes this item. Organizational should have replacement capability.*

**SAMPLE**

PRINTED NAME, GRADE OR TITLE, AND TELEPHONE NUMBER

John Smith S. SGT 793/XXXX

SIGN HERE

*John Smith*

TEAR ALONG DOTTED LINE

FILL IN YOUR  
UNIT'S ADDRESS

FOLD BACK

**DEPARTMENT OF THE ARMY**

\_\_\_\_\_  
\_\_\_\_\_

**OFFICIAL BUSINESS**

PENALTY FOR PRIVATE USE, \$300

POSTAGE AND FEES PAID  
DEPARTMENT OF THE ARMY  
DOD-314



TEAR ALONG DOTTED LINE

Commander  
US Army Armament, Munitions and Chemical Command  
ATTN: AMSMC-MAS  
Rock Island, IL 61201-9990

RECOMMENDED CHANGES TO EQUIPMENT TECHNICAL PUBLICATIONS



THEN...JOT DOWN THE DOPE ABOUT IT ON THIS FORM. CAREFULLY TEAR IT OUT. FOLD IT AND DROP IT IN THE MAIL!

SOMETHING WRONG WITH THIS PUBLICATION?

FROM: (PRINT YOUR UNIT'S COMPLETE ADDRESS)

DATE SENT

PUBLICATION NUMBER

TM 9-1005-224-24P

PUBLICATION DATE

PUBLICATION TITLE

Machine Gun, 7.62-mm M60 W/E; Mount, Tripod, M122 and Machine Gun, 7.62-mm M60D W/E

BE EXACT...PIN-POINT WHERE IT IS

PAGE NO.

PARA-GRAPH

FIGURE NO.

TABLE NO.

IN THIS SPACE TELL WHAT IS WRONG AND WHAT SHOULD BE DONE ABOUT IT:

TEAR ALONG DOTTED LINE

PRINTED NAME, GRADE OR TITLE, AND TELEPHONE NUMBER

SIGN HERE

FILL IN YOUR  
UNIT'S ADDRESS

FOLD BACK

**DEPARTMENT OF THE ARMY**

\_\_\_\_\_  
\_\_\_\_\_

**OFFICIAL BUSINESS**

PENALTY FOR PRIVATE USE, \$300

POSTAGE AND FEES PAID  
DEPARTMENT OF THE ARMY  
DOD-314



TEAR ALONG DOTTED LINE

Commander  
US Army Armament, Munitions and Chemical Command  
ATTN: AMSMC-MAS  
Rock Island, IL 61201-9990



